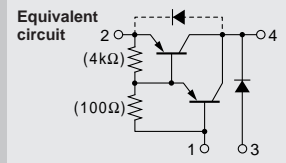


# SAH03



Silicon PNP Epitaxial Planar Transistor with Fast-Recovery Rectifier Diode

Application : Voltage change switch for motor

### Absolute maximum ratings (Ta=25°C)

| Symbol           | Ratings      | Unit |
|------------------|--------------|------|
| V <sub>CB0</sub> | -60          | V    |
| V <sub>CEO</sub> | -60          | V    |
| V <sub>EB0</sub> | -6           | V    |
| I <sub>C</sub>   | -1.2         | A    |
| I <sub>B</sub>   | -0.1         | A    |
| P <sub>C</sub>   | 1.0(Ta=25°C) | W    |
| T <sub>j</sub>   | 150          | °C   |
| T <sub>stg</sub> | -40to+150    | °C   |

### Electrical Characteristics (Ta=25°C)

| Symbol               | Conditions                                  | Ratings       | Unit |
|----------------------|---|---------------|------|
| I <sub>CB0</sub>     | V <sub>CB</sub> =-60V                       | -10max        | μA   |
| I <sub>EB0</sub>     | V <sub>EB</sub> =-6V                        | -3max         | mA   |
| V(BR) <sub>CEO</sub> | I <sub>C</sub> =-10mA                       | -60min        | V    |
| h <sub>FE</sub>      | V <sub>CE</sub> =-4V, I <sub>C</sub> =-1A   | 2000 to 12000 |      |
| V <sub>CE(sat)</sub> | I <sub>C</sub> =-1A, I <sub>B</sub> =-2mA   | -1.4max       | V    |
| f <sub>r</sub>       | V <sub>CE</sub> =-12V, I <sub>E</sub> =0.1A | 100typ        | MHz  |
| COB                  | V <sub>CB</sub> =-10V, f=1MHz               | 30typ         | pF   |
| V <sub>R</sub>       | I <sub>R</sub> =100μA                       | 100 min       | V    |
| V <sub>F</sub>       | I <sub>F</sub> =0.5A                        | 1.5 max       | V    |
| t <sub>rr</sub>      | I <sub>F</sub> =±100mA                      | 100 typ       | ns   |

### External Dimensions PS Pack

