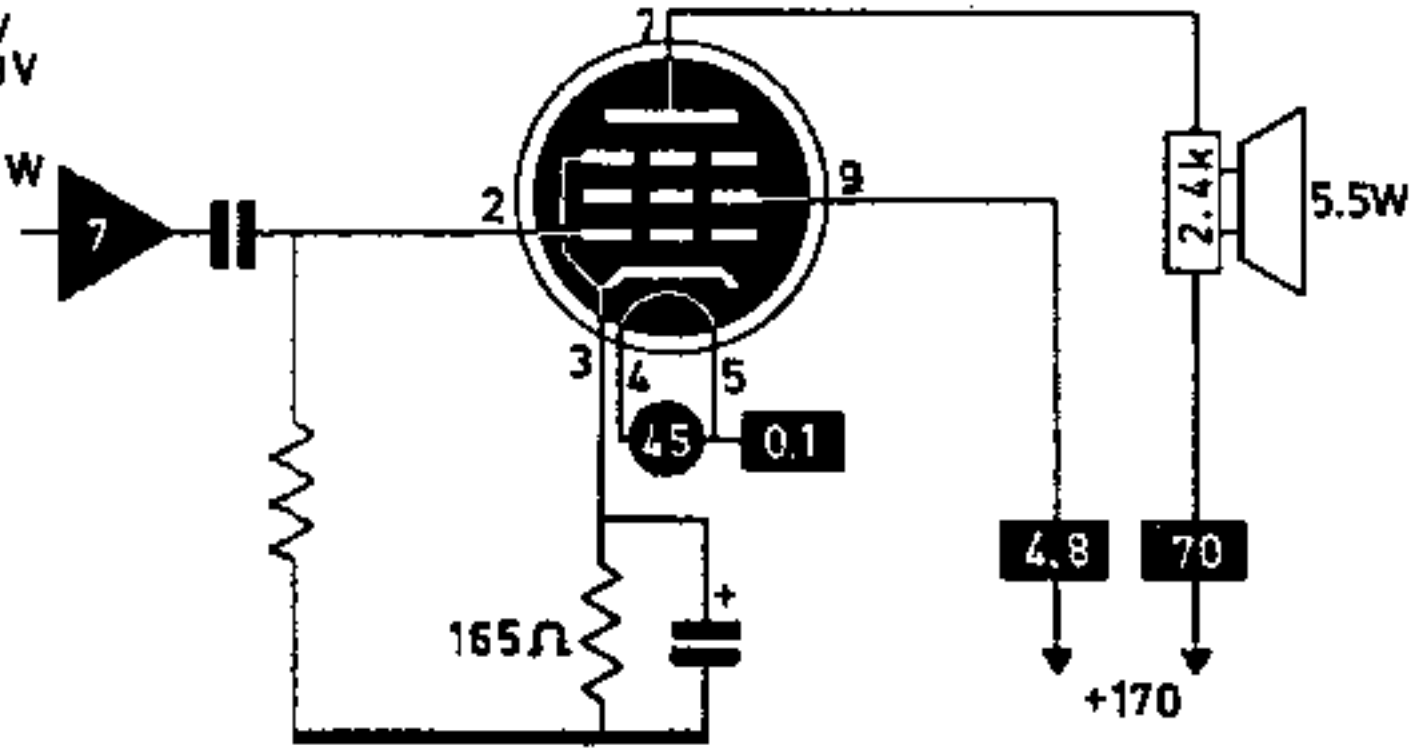


$S = 10 \text{ mA/V}$   
 $V_{g1} = -12.3 \text{ V}$   
 $R_i = 23 \text{ k}$   
 $W_a = \text{max. } 12 \text{ W}$



$S = 9 \text{ mA/V}$   
 $V_{g1} = -6.7 \text{ V}$   
 $R_i = 20 \text{ k}$   
 $W_a = \text{max. } 12 \text{ W}$

