

- **Integrated, Single-Chip Solution for Battery Charge Control and Power Supply Management**
- **Linear Charger for Single-Cell Li-Ion or Li-Polymer Packs**
- **Integrated Control Over Precharge, Constant-Current and Constant-Voltage Charging Phases**
- **Programmable Charging Current**
- **Programmable Charge Termination by Minimum Current and Time**
- **Battery Temperature Sensing**
- **Pack Wake Up and Damaged Cell Detect Functions**
- **Safety Charge Timers During Precharge and Constant-Current Charging**
- **Six Programmable Low-Dropout Linear Voltage Regulators**
- **System Over- and Under-Voltage Shut Down**
- **Power On/Power Off and Reset Control Logic**
- **Three Individually Selectable LED Backlight Drivers**
- **Vibrator and Ringer Drivers**
- **Internal 8-Bit Analog-to-Digital Converter (ADC) with Auxiliary Inputs**
- **I²C Control Interface**
- **48-Terminal Plastic TQFP(PFB)**

description

The TWL2213 is a single-chip battery and power management solution for wireless handsets, pagers, personal data assistants (PDAs), and other battery-powered devices. For battery charging, the device incorporates a linear charger for single-cell Li-Ion and lithium polymer battery packs. Prior to charging, the TWL2213 initiates battery pack wake up and damaged cell detect functions. For deeply discharged batteries, the device performs precharge conditioning by trickle-charge to user-defined current settings. Once acceptable pack voltage is detected, TWL2213 applies a constant-current fast charge at a current level that is determined by a combination of an external sense resistor and user-programmable sense voltage. When the battery reaches the selected charge regulation voltage, TWL2213 maintains regulation until charging is terminated by a minimum current or a timer. During the entire charge cycle, TWL2213 monitors temperature by external thermistor and suspends charging if temperature exceeds a programmed range. Three programmable safety timers limit the precharge, constant-current, and total charge times.

For power management, the TWL2213 includes six low-dropout linear voltage regulators. One regulator is driven from the device's power on/off logic and incorporates a microcontroller reset function. Five low noise regulators include individually programmable output voltage and enable-disable. The TWL2213 can be powered from a battery or AC adapter. When an adapter is present, it supplies power to the device, allowing the system to function without battery.

TWL2213 also includes individually selectable drivers for three separate backlight LEDs, a ringer, and a vibrator motor. An internal 8-bit analog-to-digital converter (ADC) is accessible from external pins. The system microcontroller accesses all TWL2213 programming and status via the I²C serial interface.

The TWL2213 device is packaged in the Texas Instruments 48-terminal plastic thin quad flatpack (TQFP) package (PFB).



Please be aware that an important notice concerning availability, standard warranty, and use in critical applications of Texas Instruments semiconductor products and disclaimers thereto appears at the end of this data sheet.

PRODUCTION DATA information is current as of publication date. Products conform to specifications per the terms of Texas Instruments standard warranty. Production processing does not necessarily include testing of all parameters.

 **TEXAS
INSTRUMENTS**

POST OFFICE BOX 655303 • DALLAS, TEXAS 75265

Copyright © 2001, Texas Instruments Incorporated

TWL2213CA

POWER SUPPLY MANAGEMENT IC AND

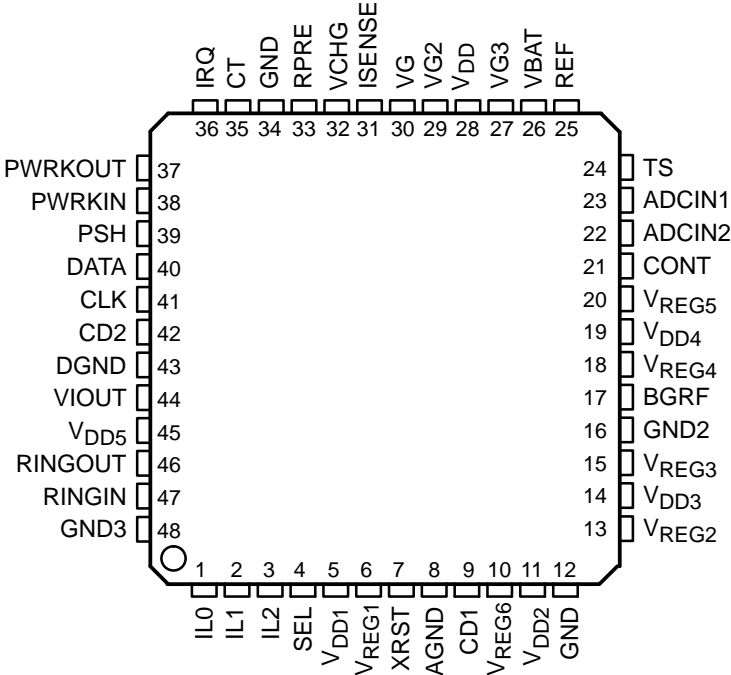
Li-Ion BATTERY CHARGE CONTROL

SLVS280 – MARCH 2001

AVAILABLE OPTIONS

T _A	DEVICE NAME	PACKAGE	OUTPUT VOLTAGE	
			REGULATOR 1	REGULATOR 6
–40°C to 85°C	TWL2213CAPFBR	TQFP	2.8 V	3 V

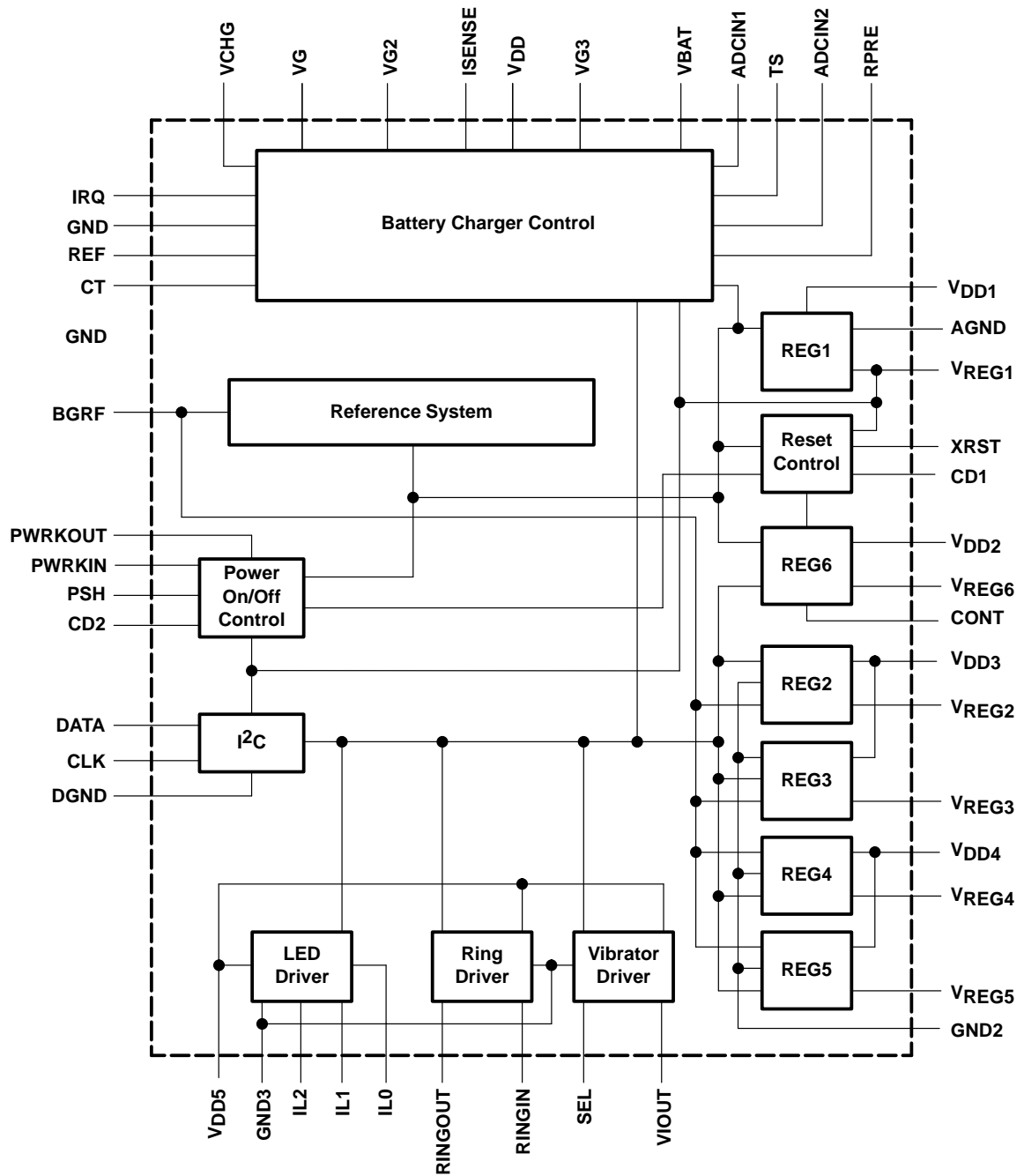
PFB PACKAGE
(TOP VIEW)



DISSIPATION RATING TABLE

PACKAGE	T _A = 25°C POWER RATING	OPERATING FACTOR ABOVE 25°C	T _A = 70°C POWER RATING	T _A = 85°C POWER RATING
PFB	1962 mW	15.7 mW/C	1256 mW	1020 mW

block diagram



TWL2213CA
POWER SUPPLY MANAGEMENT IC AND
Li-Ion BATTERY CHARGE CONTROL

SLVS280 – MARCH 2001

Terminal Functions

TERMINAL		I/O	DESCRIPTION
NAME	PFB NO.		
ADCIN1	23	I	ADC input
ADCIN2	22	I	ADC input
AGND	8	I/O	Regulator 1 ground
BGRF	17	I/O	Band gap output bypass capacitance
CD1	9	I/O	XRST output delay adjustment capacitance
CD2	42	I/O	Regulator 1 off delay adjustment capacitance
CLK	41	I	I ² C bus serial clock input
CONT	21	I	Regulator 6 is always on after power up except when CONT = H; regulator 6 is enabled through I ² C interface.
CT	35	I/O	External oscillator timing cap
DATA	40	I/O	I ² C bus serial address/data input output; this is a bidirectional terminal
DGND	43	I/O	Digital ground
GND	12, 34	I/O	Ground
GND2	16	I/O	Ground for VREG2, VREG3, VREG4, and VREG5
GND3	48	I/O	Vibrator, LED, ringer ground
IL0	1	O	160-mA LED driver output
IL1	2	O	20-mA LED driver output
IL2	3	O	10-mA LED driver output
IRQ	36	O	Interrupt signal for external controller regarding to charger START/STOP action
ISENSE	31	I	Current sense input for charger function
PSH	39	I	Power hold signal from controller
PWRKIN	38	I	Power-up start
PWRKOUT	37	O	Power-up signal for CPU
REF	25	O	Voltage reference during charge cycle, 3 V, I _O = 3 mA
RINGIN	47	I/O	Input for ring driver
RINGOUT	46	O	Ring driver output
RPRE	33	I/O	Precharge current sense resistor
SEL	4	I	Input for vibrator output voltage change
TS	24	I	Battery temperature sense input voltage
VBAT	26	I/O	Battery voltage sense input or output for precharge, wakeup
VCHG	32	I	DC voltage input for charger
VDD	28	I	Device dc supply feedback for charger function
VDD1	5	I	Device dc supply input and regulator 1 input
VDD2	11	I	Input to regulator 6
VDD3	14	I	Input for regulators 2 and 3
VDD4	19	I	Input for regulators 4 and 5
VDD5	45	I	Input for vibrator, PN diode connection of ringer
VG	30	O	Gate control of an external P-FET for charger regulation
VG2	29	O	Gate control of an external P-FET for battery blockage
VG3	27	O	Gate control of an external P-FET for charging action
VIOUT	44	I/O	Vibrator output



POST OFFICE BOX 655303 • DALLAS, TEXAS 75265

Terminal Functions (Continued)

TERMINAL		I/O	DESCRIPTION
NAME	PFB NO.		
V _{REG1}	6	O	Regulator 1 output
V _{REG2}	13	O	Regulator 2 output
V _{REG3}	15	O	Regulator 3 output
V _{REG4}	18	O	Regulator 4 output
V _{REG5}	20	O	Regulator 5 output
V _{REG6}	10	O	Regulator 6 output
XRST	7	O	Reset output

detailed description

power on/off control

The power on/off control circuit controls the timing of the delayed power on reset. There are two different reset conditions: the manual power condition and the adapter power-on condition.

Under the manual-powered condition, if the power key is pressed, the PWRKIN signal goes high and V_{REG1} (regulator 1 output) is enabled. After V_{REG1} reaches 90% of its nominal output voltage, the TWL2213 starts the delayed reset process by charging the reset timing capacitor (CD1). When the voltage of CD1 reaches 1.2 V, the XRST signal is released by TWL2213 and is pulled high by an external pull-up resistor. This completes the reset process, and the external controller operates in normal condition. While the PWRKIN signal remains high, the power-on condition remains active. Before the PWRKIN signal goes low, the external controller must drive PSH high to retain power; otherwise, the TWL2213 starts the delay power-off process by charging the CD2 timing capacitor. After the voltage of CD2 reaches 1.2 V and no valid PSH signal is received, the device is powered off.

Under the adapter power-on condition, no battery is attached to the device. During the power-off state, after the adapter is attached, the output of V_{REG1} (regulator 1 output) is automatically enabled. After V_{REG1} reaches 90% of its nominal output voltage, the TWL2213 starts the delayed reset process by charging the reset timing capacitor (CD1). When the voltage of CD1 reaches 1.2 V, the XRST signal is released by TWL2213 and is pulled high by an external pull-up resistor. This completes the reset process, and the external controller operates in normal condition. The external controller must drive PSH high to retain power; otherwise, the TWL2213 starts the delay power-off process by charging the CD2 timing capacitor. After the voltage of CD2 reaches 1.2 V and no valid PSH signal is received, the device is powered off.

During the power-on state, the device generates an output signal (PWRKOUT) with the inverted polarity to PWRKIN. The external controller can use the PWRKOUT signal to detect power key action.

TWL2213CA POWER SUPPLY MANAGEMENT IC AND Li-Ion BATTERY CHARGE CONTROL

SLVS280 – MARCH 2001

detailed description (continued)

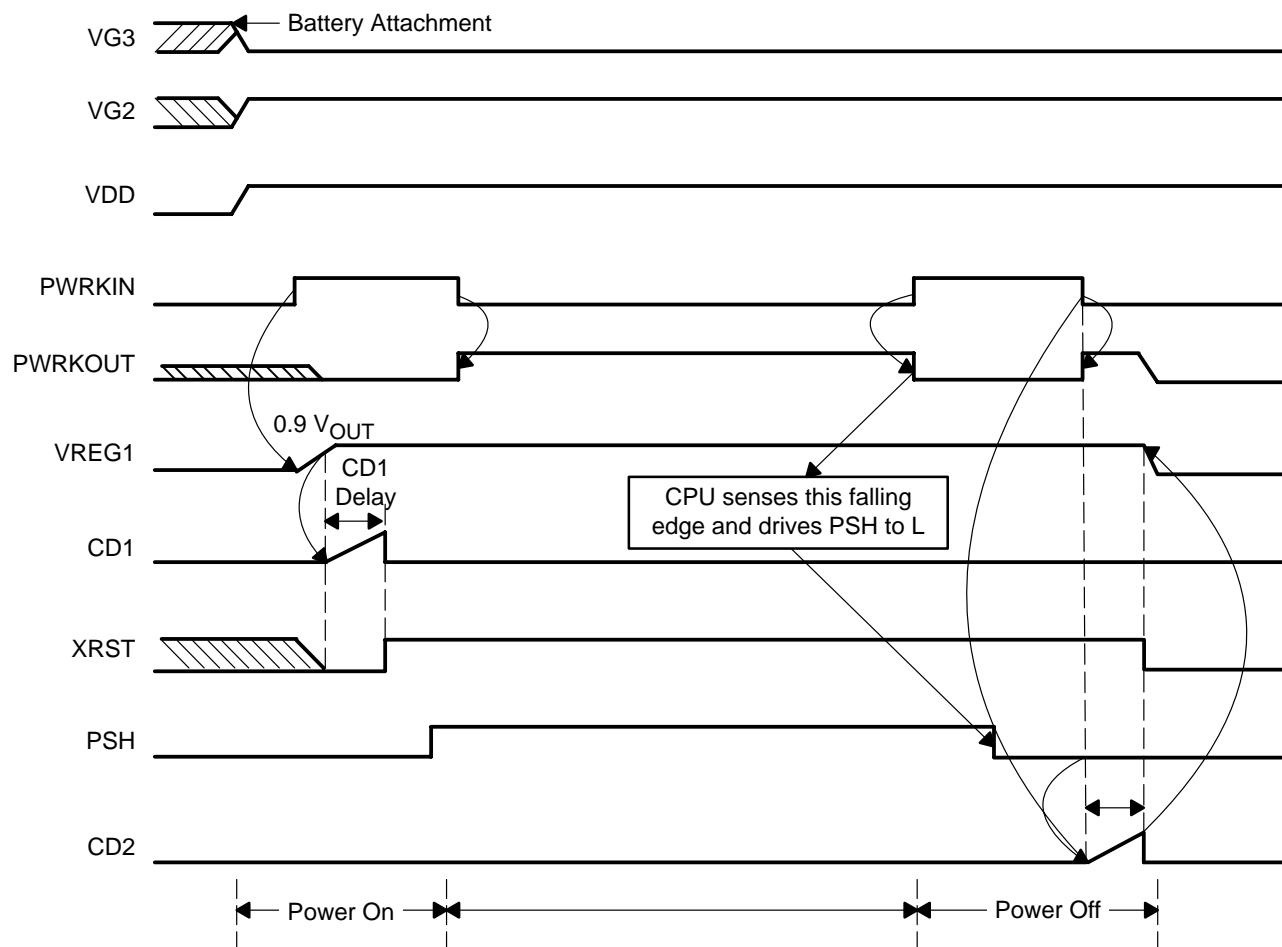


Figure 1. Power-On/-Off Sequence

detailed description (continued)

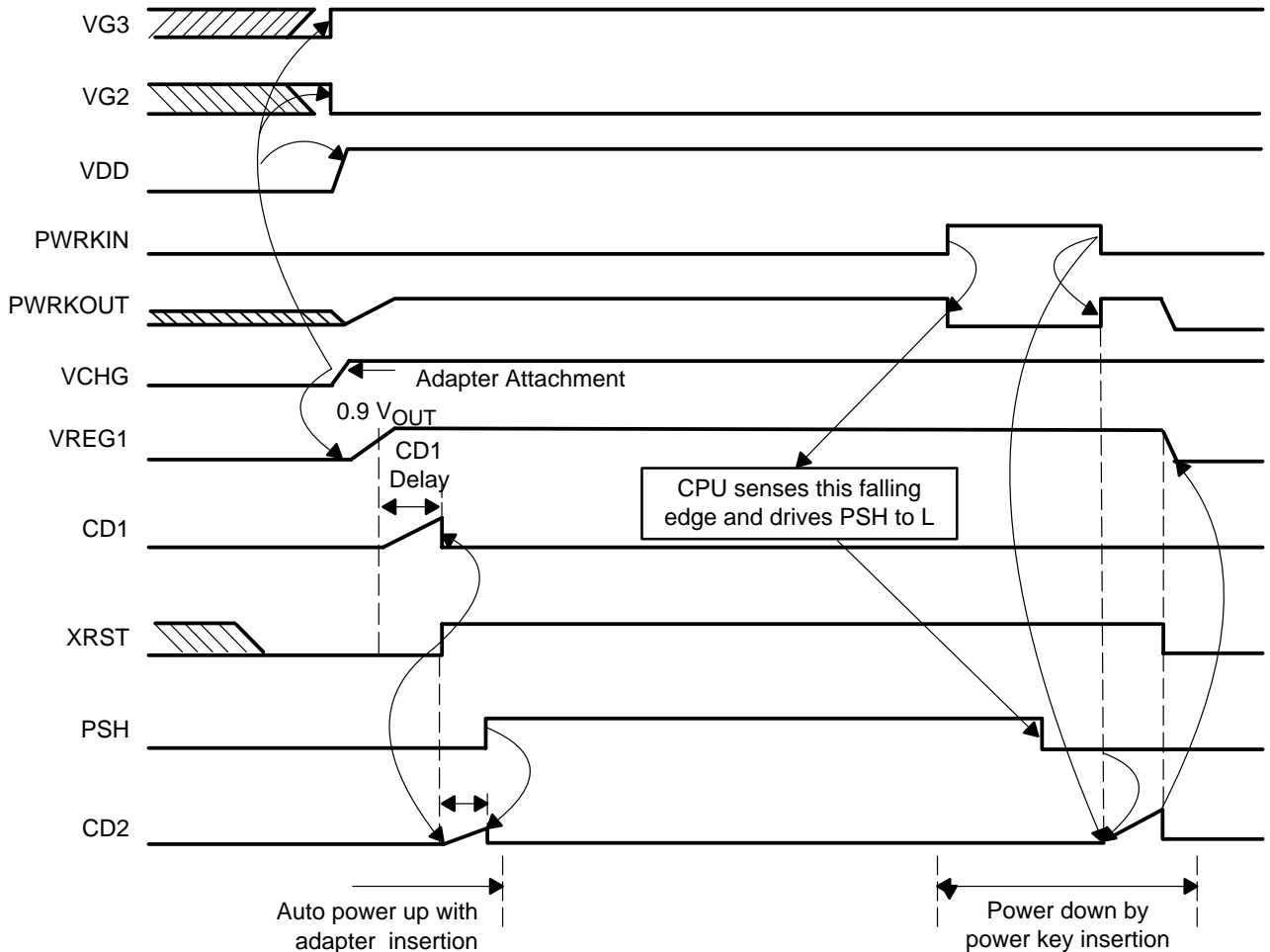


Figure 2. Power-On/Off Sequence

reset controller

The reset controller performs two major functions; one is to control the timing of delayed power-on reset, and the other is to monitor the V_{REG1} level.

The delay reset process is started when V_{REG1} (regulator 1 output) reaches 90% of its nominal output voltage level. The delay time of the reset output (XRST) can be adjusted by external timing capacitance (CD1) (see Figure 1, and Figure 2).

During system active state when V_{REG1} drops below $0.9V_{nominal} - \text{hysteresis}$, XRST is driven low. If V_{REG1} reaches 90% of its nominal output voltage level again, the delayed reset process starts over.

detailed description (continued)

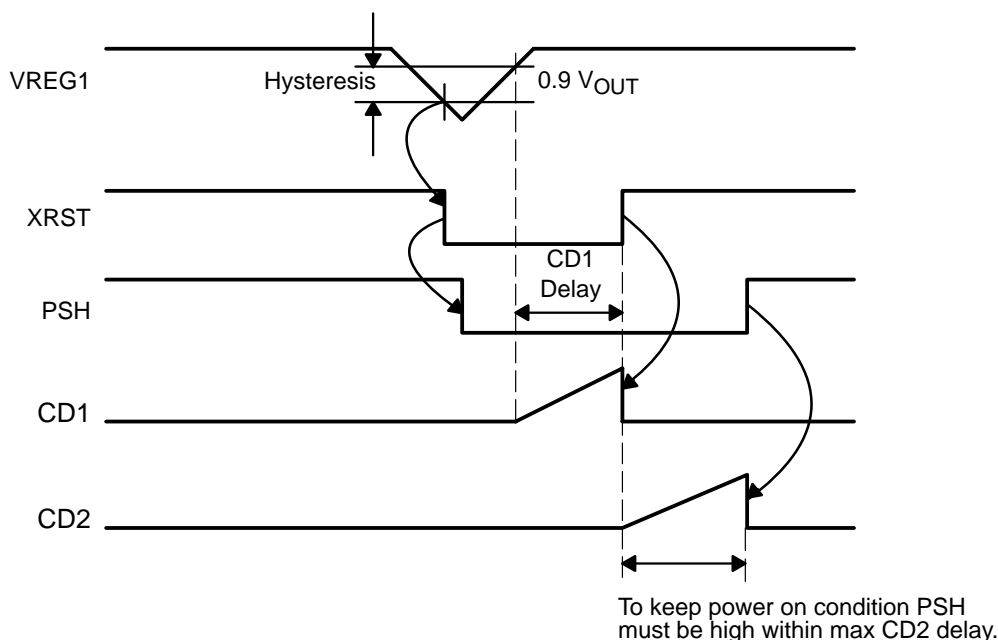


Figure 3. V_{REG1} Monitoring of Reset Control

regulator 1

This regulator is automatically enabled after the power-on process is complete. It stays enabled until the power-off condition occurs. Regulator 1 supplies power to the microprocessor. The nominal output voltage is 2.8 V, and the maximum output current is 150 mA. It requires an output capacitor in the range of 4.7 μ F–10 μ F with an equivalent serial resistance (ESR) less than 6 Ω .

regulator 6

This regulator output voltage can be enabled by I²C/SPI by attaching the CONT terminal to V_{DD}. Attaching CONT to GND makes this regulator automatically enabled with power on. The output voltage is programmed by I²C/SPI. The maximum out current of 100 mA requires an output capacitor in range of 4.7 μ F–10 μ F, with ESR in the range of 1 Ω –6 Ω . The output voltage ranges from 2.5 V to 3 V.

regulators 2, 3, 4, and 5

Regulators 2, 3, 4, and 5 are output voltages programmed and enabled by I²C. The output voltage ranges from 2.3 V to 3 V in 100-mV steps. The maximum output current for regulators 2 and 3 is 80 mA, for regulator 4 it is 120 mA, and for regulator 5 it is 150 mA. The default output voltage for all regulators is 3 V. These regulators have very low output noise; this noise level is suitable for powering up the RF block, which requires an output capacitor in the range of 4.7 μ F–10 μ F with an ESR less than 6 Ω .

vibrator driver

The TWL2213 device has incorporated a vibrator driver with selectable output voltage and current. This integrated vibrator driver has the same feature as the other load dropout (LDO) regulators. The vibrator is enabled by I²C. The output voltage can be selected by tying the SEL terminal to V_{DD} or GND. If the SEL terminal is tied to V_{DD}, the output voltage is set to 3 V. If the SEL terminal is tied to GND, the output voltage is set to 1.3 V.

detailed description (continued)

LED driver

The TWL2213 device provides the capability of driving three LEDs. These drivers, enabled by I²C, can drive currents of 160 mA, 20 mA, and 10 mA individually with a maximum voltage drop of 0.8 V.

ringer driver

The TWL2213 device provides the capability of driving a ringer. It is enabled by I²C and uses an N-channel FET with a maximum resistance of 3 Ω .

I²C

This block provides I²C interface to the external devices.

battery charger control

This block provides the necessary signals to control the external circuits that perform the charger function. The charging activities include battery pack wake up, precharge, fast charge, and battery temperature monitoring. This block also provides two ADC inputs for general measurement purpose. The input voltage level is from 0 to 2 volts. This block also includes an oscillator generator circuit, which generates the clocks for the device. The nominal frequency of the main clock is 500 kHz. It requires an external capacitor of 470 pF.

reference system

This block provides voltage reference and bias current for the internal circuitry.

absolute maximum ratings over operating free-air temperature (unless otherwise noted)[†]

VCHG to GND (terminal 34)	–0.3 V to 12 V
All other terminals relative to GND	–0.3 V to 6.5 V
Operating ambient temperature	–25°C to 85°C
Operating junction temperature range, T _J	–25°C to 150°C
Storage temperature range, T _{stg}	–55°C to 150°C
Soldering temperature (for 10 seconds)	260°C

[†] Stresses beyond those listed under “absolute maximum ratings” may cause permanent damage to the device. These are stress ratings only, and functional operation of the device at these or any other conditions beyond those indicated under “recommended operating conditions” is not implied. Exposure to absolute-maximum-rated conditions for extended periods may affect device reliability.

recommended operating conditions

	MIN	MAX	UNIT
VCHG	4.5	6	V
V _{DD1} – V _{DD5}	3.3	4.3	V
High-level logic input, PWRKIN, SEL, CONT	0.7V _{DD1}	V _{DD1}	V
Low-level logic input, PWRKIN, SEL, CONT	GND	0.3V _{DD1}	V
High-level logic input, PSH	0.7V _{REG1}	V _{REG1}	V
Low-level logic input, PSH	GND	0.3V _{REG1}	V
Precharge current		100	mA

TWL2213CA

POWER SUPPLY MANAGEMENT IC AND Li-Ion BATTERY CHARGE CONTROL

SLVS280 – MARCH 2001

electrical characteristics

regulator 1 ($C_O = 4.7 \mu\text{F}$ with $\text{ESR} = 2 \Omega$)

PARAMETER		TEST CONDITIONS	MIN	TYP	MAX	UNIT
VREG1	Output voltage	I _O = I _{MAX}	2.68	2.8	2.91	V
I _O	Output current	V _{DD1} = 3.8 V			150	mA
I _{OS}	Short circuit	V _{DD1} = 3.8 V			550	mA
	Load regulation	I _O = 1 mA to I _{MAX} , V _{DD1} = 3.8 V			80	mV
	Line regulation	V _{DD1} = 3.3 V to 4.3 V, I _O = I _{MAX}			20	mV
	Dropout voltage	I _O = I _{MAX}		100	300	mV
k _{VIO}	Ripple rejection	f = 120 Hz, V _{DD1} = 3.8 V	40			dB
I _(Standby)	Standby current	I _O = 1.5 mA (regulator 1 and internal bias circuitry are active)			120	μA

regulator 6 ($C_O = 4.7 \mu\text{F}$ with $\text{ESR} = 2 \Omega$)

This 100 mA LDO can be enabled with serial interface I²C or by the CONT terminal. The output range is from 2.5 V to 3 V.

PARAMETER	TEST CONDITIONS	MIN	TYP	MAX	UNIT
V _{REG6}	CONT = Low	2.88	3	3.12	V
	CONT = High (see Note 1 and function register 4)	0.96V _p	V _p	1.04V _p	V
I _O	Output current			100	mA
	Short circuit			330	mA
	Load regulation	I _O = 1 mA to I _{MAX} , V _{DD2} = 3.8 V		70	mV
V _S	Line regulation	V _{DD2} = 3.3 V to 4.3 V, I _O = I _{MAX}		20	mV
	Dropout voltage	I _O = I _{MAX}	100	300	mV
K _{VIO}	Ripple rejection	f = 120 Hz	40		dB
t _{on}	Turnon time	See Note 2		150	μs
t _{off}	Turnoff time	See Note 3	2	5	ms
I _(Quiescent)	Quiescent current	I _O = 1.5 mA		30	μA

NOTES: 1. I²C-programmable. V_(p) is the programmed voltage. Refer to function registers 2 and 3 for programming information.
2. Output enable to output voltage = 0.9 × nominal value
3. Output disable to output voltage = 0.5 V

electrical characteristics (continued)

regulators 2, 3, 4, and 5 ($C_O = 4.7 \mu\text{F}$ with $\text{ESR} = 2 \Omega$)

Regulators 2, 3, 4, and 5 provide programmable output. The output range, 2.3 V to 3 V, can be programmed in 100-mV steps.

PARAMETER	TEST CONDITIONS	MIN	TYP	MAX	UNIT
V_O Output voltage	See Note 1	$0.96V_p$	V_p	$1.04V_p$	V
I_O Output current	Regulator 2			80	mA
	Regulator 3			80	
	Regulator 4			120	
	Regulator 5			150	
Short-circuit current	Regulator 2			300	mA
	Regulator 3			300	
	Regulator 4			400	
	Regulator 5			500	
Load regulation	Regulator 2, $I_O = 1 \text{ mA}$ to I_{MAX}			70	mV
	Regulator 4, $I_O = 1 \text{ mA}$ to I_{MAX}			50	
	Regulators 3 and 5, $I_O = 1 \text{ mA}$ to I_{MAX}			50	
Line regulation	$V_I = 3.3 \text{ V}$ to 4.3 V			20	mV
$V_{(\text{dropout})}$ Dropout voltage	$I_O = I_{MAX}$			300	mV
K_{VIO} Ripple rejection	$f = 10 \text{ kHz}$	40			dB
N Output noise	$f = 10 \text{ Hz}$ to 100 kHz , $I_O = I_{MAX}$, $V_I = 3.3 \text{ V}$		45		μVRMS
t_{on} Turnon time	See Note 2			80	μs
t_{off} Turnoff time	No load, See Note 3		1	5	ms
$I_{(\text{Quiescent})}$ Quiescent current	$I_O = 1 \text{ mA}$			150	μA

regulator 1 voltage DET

PARAMETER	TEST CONDITIONS	MIN	TYP	MAX	UNIT
V_O Voltage at XRST (see Note 4)	$V_{REG1} \leq V_{TH} - V_{HY}$		0	0.3	V
	$V_{REG1} \geq V_{TH}$		V_{REG1}		
V_{HY} Hysteresis Voltage		80	100	120	mV
Time delay voltage at CD1		1.15	1.2	1.25	V
Time delay current at CD1		0.7	1	1.3	μA

NOTE 4: V_{TH} is 90% of the nominal V_{REG1} .

LED driver

PARAMETER	TEST CONDITIONS	MIN	TYP	MAX	UNIT
Output current at IL0	$V_{IL0} = 0.8 \text{ V}$			160	mA
Output current at IL1	$V_{IL1} = 0.8 \text{ V}$			20	mA
Output current at IL2	$V_{IL2} = 0.8 \text{ V}$			10	mA
I_{lkg} Leakage current	Off			1	μA

TWL2213CA

POWER SUPPLY MANAGEMENT IC AND Li-Ion BATTERY CHARGE CONTROL

SLVS280 – MARCH 2001

electrical characteristics (continued)

vibrator driver

PARAMETER		TEST CONDITIONS	MIN	TYP	MAX	UNIT
V _O	Output voltage	SEL = H	2.88	3	3.12	V
I _O	Output current	SEL = H			85	mA
V _O	Output voltage	SEL = L	1.17	1.3	1.43	V
I _O	Output current	SEL = L			140	mA
V _s	Line regulation	V _{DD5} = 3.3 V to 4.3 V, I _{OUT} = I _{MAX}			20	mV
	Load regulation	I _{OUT} = 1 mA to I _{MAX} , V _{DD5} = 3.8 V			80	mV
I _(Quiescent)	Quiescent current	I _{OUT} = 0			80	μA
I _L	Current limit	V _O = 0, V _{DD5} = 3.3 V to 4.3 V			490	mA

ring driver

PARAMETER		TEST CONDITIONS	MIN	TYP	MAX	UNIT
	On resistance	I _{out} = 100 mA at 25°C			3	Ω
I _{lkg}	Leakage current	Off			1	μA

battery charger control

PARAMETER		TEST CONDITIONS	MIN	TYP	MAX	UNIT
V _{DD1}	System V _{DD}	V(BREG) = 4.1 V	4.059	4.1	4.141	V
		V(BREG) = 4.2 V (see function control register)	4.158	4.2	4.242	
V _{REF}		Required 0.1 μF capacitor ESR of 2 Ω, load = 1 mA maximum	2.91	3	3.09	V
V _(current sense)	Current sense voltage	Set maximum current, 100 to 200, in 20-mV steps with I ² C. See CSV register.		V _{sense}		mV
VG	VGH	IGH = –0 mA		VCHG		V
	VGL	IGL = –0 mA		0		V
IG	IGH	VG = 2 V	149	178.5	197	μA
	IGL		214	218	226	
VG2	VG2H	IG2H = 0 mA		VBAT		V
	VG2L	IG2L = 0 mA		0		
IG2	IG2H	VG2 = VBAT – 0.3 V	–2.8	–4.03	–4.65	mA
	IG2L	VG2 = 0.3 V	3.2	5.02	5.70	
VG3	VG3H	IG3H = –0 mA		V _{DD1}		V
	VG3L	IG3L = 0 mA		0		
IG3	IG3H	VG3 = V _{DD1} – 0.3 V	–2.7	–3.87	–4.65	mA
	IG3L	VG3 = 0.3 V	2.95	4.43	5.3	

electrical characteristics (continued)

battery charger control (continued)

PARAMETER		TEST CONDITIONS	MIN	TYP	MAX	UNIT
VBAT regulation (CV)		V(BREG) = 4.1 V (See Note 5)	4.059	4.1	4.141	V
		V(BREG) = 4.2 V	4.158	4.2	4.242	
VBAT	Low voltage cutoff			1.9		V
	High voltage cutoff			4.45		
	Fast charge voltage			3.2		
	Precharge voltage	(see Note 6)	1.9	2.05	2.2	
	Pack wake-up voltage		4.214	4.30	4.386	
I _{CC}	Operating current			20		mA

NOTES: 5. V(BREG) is the regulated battery voltage programmed by setting bit1 of CSV register.

6. Precharge current set by $I_{pre} = \frac{V_{RPC}}{R_{PC}} \times 45$ where $V_{RPC} = 1.2 \text{ V} \pm 10\%$

ADC specification

PARAMETER	TEST CONDITIONS	MIN	TYP	MAX	UNIT
Resolution	Output impedance < 100 kΩ		8		bit
Integral nonlinearity	Confirm monotonous (see Note 7)	-1		1	LSB
Low-level input	ADC output = 00H	0		0.1	V
High-level input	ADC output = FFH	1.9	2	2.1	V
Input capacitance			3		pF
ADC CLK		450	500	550	kHz
ADC conversion time, t _C	From the start of SETUP		16		CLK
Power-up time	From the ADEN up selection			10	μs

NOTE 7: $LSB = \frac{2V}{255} = 7.8 \text{ mV}$

logic level output

PARAMETER	TEST CONDITION	MIN	MAX	UNIT
V _{OH} of terminals PWRKOUT, IRQ	I _{OH} = -2 mA	0.8V _{REG1}	V _{REG1}	V
V _{OL} of terminals PWRKOUT, IRQ	I _{OL} = 2 mA	GND	0.22V _{REG1}	V
V _{OL} of DATA	I _{OL} = 2 mA	GND	0.22V _{REG1}	V
V _{OH} of Xrst	I _{OH} = -2 mA (open drain with 100-kΩ internal pullup)		V _{REG1}	V
V _{OL} of Xrst	I _{OL} = 2 mA (open drain 100-kΩ internal pullup)	GND	0.22V _{REG1}	V

TWL2213CA POWER SUPPLY MANAGEMENT IC AND Li-Ion BATTERY CHARGE CONTROL

SLVS280 – MARCH 2001

I²C bus protocols

The TWL2213 serial interface is designed to be I²C bus compatible, operating in the slave mode. This interface consists of the following terminals:

CLK: I²C bus serial clock. This input synchronizes the control data transfer from and to the microprocessor.

DATA: I²C bus serial address/data input/output. This is a bidirectional terminal that transfers registers, control addresses, and data into and out of the microprocessor. This terminal is an open drain and requires a pullup resistor of 10 k Ω to V_{REG1}.

The TWL2213 device has a fixed device select addresses of E4h for write mode and E5h for read mode. For normal data transfer, DATA is allowed to change only when CLK is low. Changes when CLK is high are reserved for indicating the start and stop conditions. Data transfer may be initiated only when the bus is not busy (both DATA and CLK lines remain high). During data transfer, the data line must remain stable whenever the clock line is at high. There is one clock pulse per bit of data. Each data transfer is initiated with a start condition and terminated with a stop condition. When addressed, the TWL2213 device generates an acknowledge after the reception of each byte. The master device (microprocessor) must generate an extra clock pulse that is associated with the acknowledge bit. The TWL2213 device must pull down the DATA line during the acknowledge clock pulse so that the DATA line is at stable low state during the high period of the acknowledge clock pulse. The DATA line is at a stable low state during the high period of the acknowledge related clock pulse. Setup and hold times must be taken into account. During read operations, a master must signal the end of data to the slave by not generating an acknowledge bit on the last byte that was clocked out of the slave. In this case, the slave TWL2213 device must leave the data line high to enable the master to generate the stop condition.

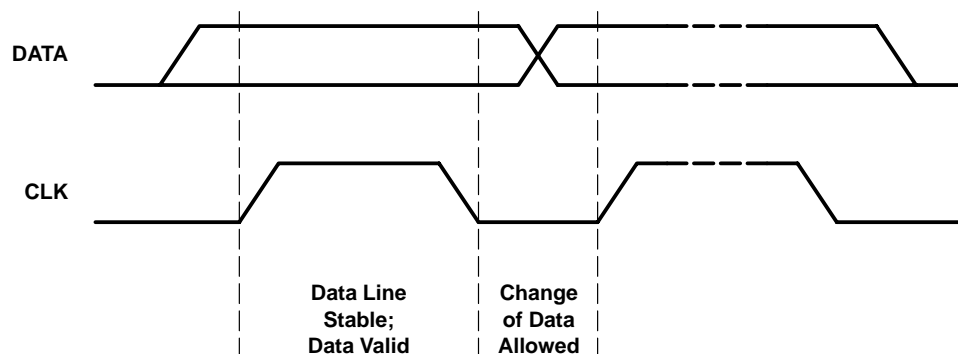


Figure 4. Bit Transfer on the I²C Bus

I²C bus protocols (continued)

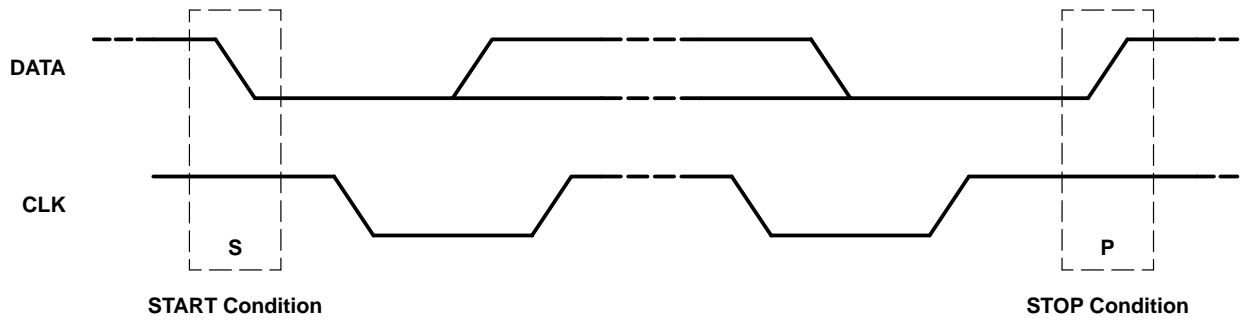


Figure 5. START and STOP Conditions

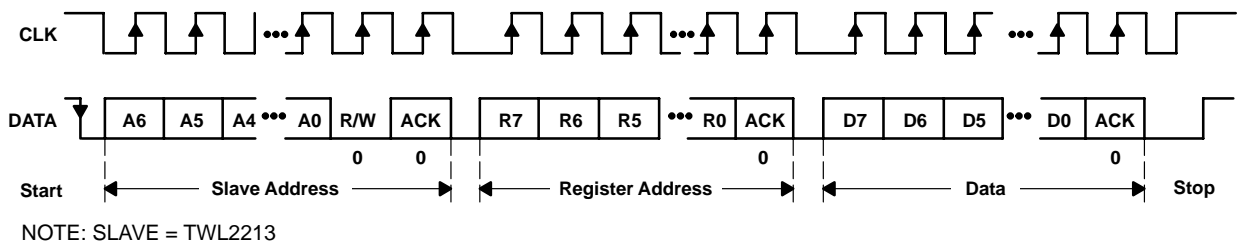


Figure 6. I²C Bus Write to TWL2213 Device

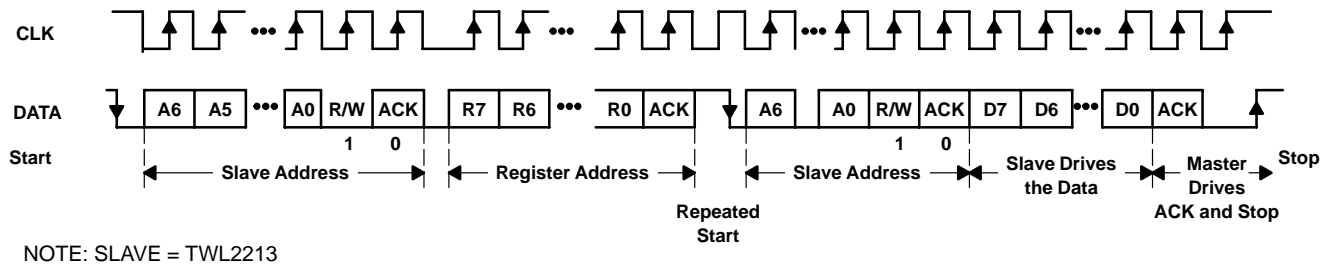


Figure 7. I²C Read From TWL2213 Protocol A

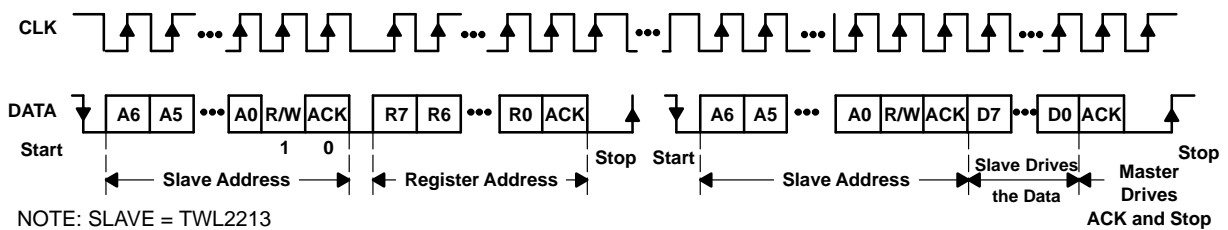


Figure 8. I²C Read From TWL2213 Protocol B

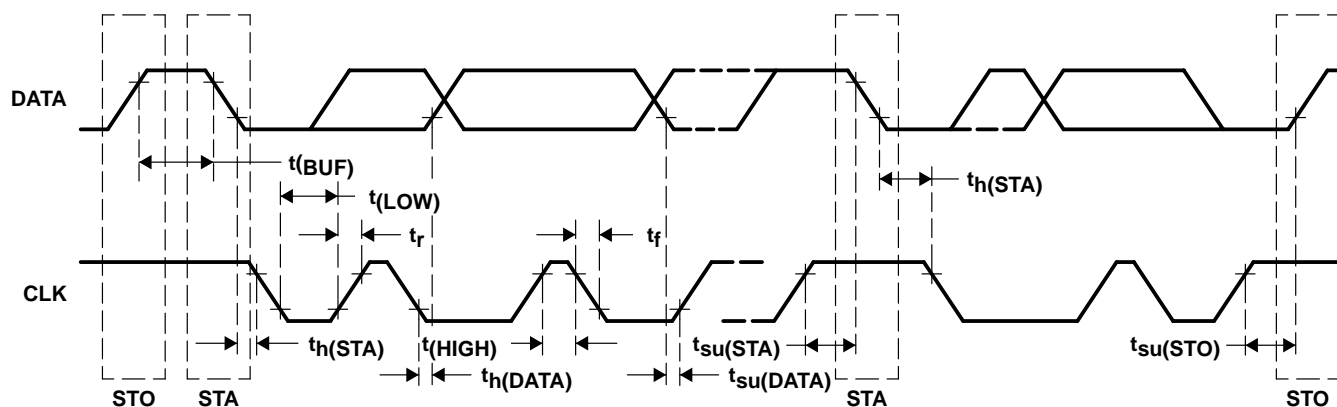
TWL2213CA

POWER SUPPLY MANAGEMENT IC AND

Li-Ion BATTERY CHARGE CONTROL

SLVS280 – MARCH 2001

I²C timing



	MIN	MAX	UNIT
Clock frequency, f_{max}		400	kHz
Clock high time, $t_{wH}(HIGH)$	600		ns
Clock low time, $t_{wL}(LOW)$	1300		ns
DATA and CLK rise time, t_r		300	ns
DATA and CLK fall time, t_f		300	ns
Hold time (repeated) START condition (after this period the first clock pulse is generated), $t_h(STA)$	600		ns
Setup time for repeated START condition, $t_{su}(DATA)$	600		ns
Data input hold time, $t_h(DATA)$	0		ns
Data input setup time, $t_{su}(DATA)$	100		ns
STOP condition setup time, $t_{su}(STO)$	600		ns
Bus free time, $t(BUF)$	1300		ns

Figure 9. I²C-Bus Timing Diagram

register map

charger

REGISTER	ADDRESS (HEX)	D7 (MSB)	D6	D5	D4	D3	D2	D1	D0 (LSB)
PTR: Precharge timer register	10h (R/W)	0 = Disable 1 = Enable	00000 = 0 minutes ⋮ 11111 = 136 minutes in 4-minute steps					Don't care	
	Default	0	0	0	0	0	0		
CCTR: CC charge timer register	11h (R/W)	0 = Disable 1 = Enable	00000 = 0 minutes ⋮ 11111 = 273 minutes in 8-minute steps					Don't care	
	Default	0	0	0	0	0	0		
TCTR: Total charge timer (CC+CV) register	12h (R/W)	0000 = 0 hours ⋮ 1111 = 15 hours in 1-hour steps				Don't care			
	Default	1	1	1	1				
VBOTRH+: Battery over temperature register at High+	13h (R/W)	00h = 0 V ⋮ FFh = 2 V							
	Default	00h = 0 V							
VBOTRH-: Battery over temperature register at High–	14h (R/W)	00h = 0 V ⋮ FFh = 2 V							
	Default	00h = 0 V							
VBOTRL: Battery over temperature register at low	15h (R/W)	00h = 0 V ⋮ FFh = 2 V							
	Default	00h = 0 V							
CSV: Charge current sensing voltage and termination current ratio	16h (R/W)	Sensing voltage 000 = 100 mV ⋮ 101 = 200 mV in 20-mV steps			Termination current ratio 000 = 10% ⋮ 100 = 50% in 10% steps			0 = 4.1 V 1 = 4.2 V	Don't care
	Default	0	0	0	0	0	0	0	
ADBV: Battery voltage	17h (R)	VABV = 2 V × 2.5 × Value/256							
ADBT: Battery temperature voltage	18h (R)	VADBAT = 2 V × Value/256							
ADCIN1: Voltage	19h (R)	VADCIN1 = 2 V × Value/256							
ADCIN2: Voltage	1Ah (R)	VADCIN2 = 2 V × Value/256							

charger (continued)

REGISTER	ADDRESS (HEX)	D7 (MSB)	D6	D5	D4	D3	D2	D1	D0 (LSB)
FCR1: Function control	1Bh (R/W)	CHGSTR 0 = 1 = Charger start See Note 8	ADC status 0 = Disable 1 = Enable See Notes 8 and 9	ADC function 0 = Single 1 = Periodically See Notes 8 and 9	ADBV 0 = Disable 1 = Enable See Notes 8 and 10	VTs 0 = Disable 1 = Enable See Notes 8 and 11	ADCIN1 0 = Disable 1 = Enable See Notes 8 and 11	ADCIN2 0 = Disable 1 = Enable See Notes 8 and 11	IRQ 0 = IRQ is L 1 = IRQ is H
	Default	0	0	0	0	0	0	0	0
SR: STATUS register	1Ch (R)	VEXT 1 = VCCHG in range	BATERR 1 = Battery error	VBOT 1 = Battery overvoltage	CTERM 1 = Charge current goes below termination out	NOCHG 1 = A charge condition, reset CHGSTR to 0. See Note 12	PCHG 1 = Precharge mode	CCTO 1 = CC charge timeout	TCTO 1 = Total charge time (CC+CV) out

- NOTES: 8. After TWL2213 has finished charging, these values are set to 0.
 9. During CHGSTR H, ADC enables and periodically keeps functioning.
 10. During charging mode, ADVB is enabled automatically.
 11. Charging mode is not necessary to set enable for function.
 12. External microprocessor must set CHGSTR bit to 0 when NOCHG = 1

regulator, LED, VIBRATOR

REGISTER	ADDRESS (HEX)	D7 (MSB)	D6	D5	D4	D3	D2	D1	D0 (LSB)
FCR2: Function register 2	20h (R/W)	REG2				REG3			
		0 = Disable 1 = Enable	000 = 3 V ⋮ 111 = 2.3 V in 100-mV steps			0 = Disable 1 = Enable	000 = 3 V ⋮ 111 = 2.3 V in 100-mV steps		
	Default	0	0	0	0	0	0	0	0
FCR3: Function register 3	21h (R/W)	REG4				REG5			
		0 = Disable 1 = Enable	000 = 3 V ⋮ 101 = 2.5 V in 100-mV steps			0 = Disable 1 = Enable	000 = 3 V ⋮ 101 = 2.5 V in 100-mV steps		
	Default	0	0	0	0	0	0	0	0
FCR4: Function register 4	22h (R/W)	REG6				Don't care			
		0 = Disable 1 = Enable See Note 13	000 = 3 V ⋮ 101 = 2.5 V in 100-mV steps						
	Default	0	0	0	0				
FCR5: Function register 5	23 (R/W)	Vibrator	Ringer	IL2	IL1	IL0	Don't care		
		0 = Disable 1 = Enable	0 = Disable 1 = Enable	0 = Disable 1 = Enable	0 = Disable 1 = Enable	0 = Disable 1 = Enable			
	Default	0	0	0	0	0			

NOTE 13: CONT = H REG6 is dependent on D7 to enable, CONT = L REG6 is independent of D7, always on after power up

APPLICATION INFORMATION

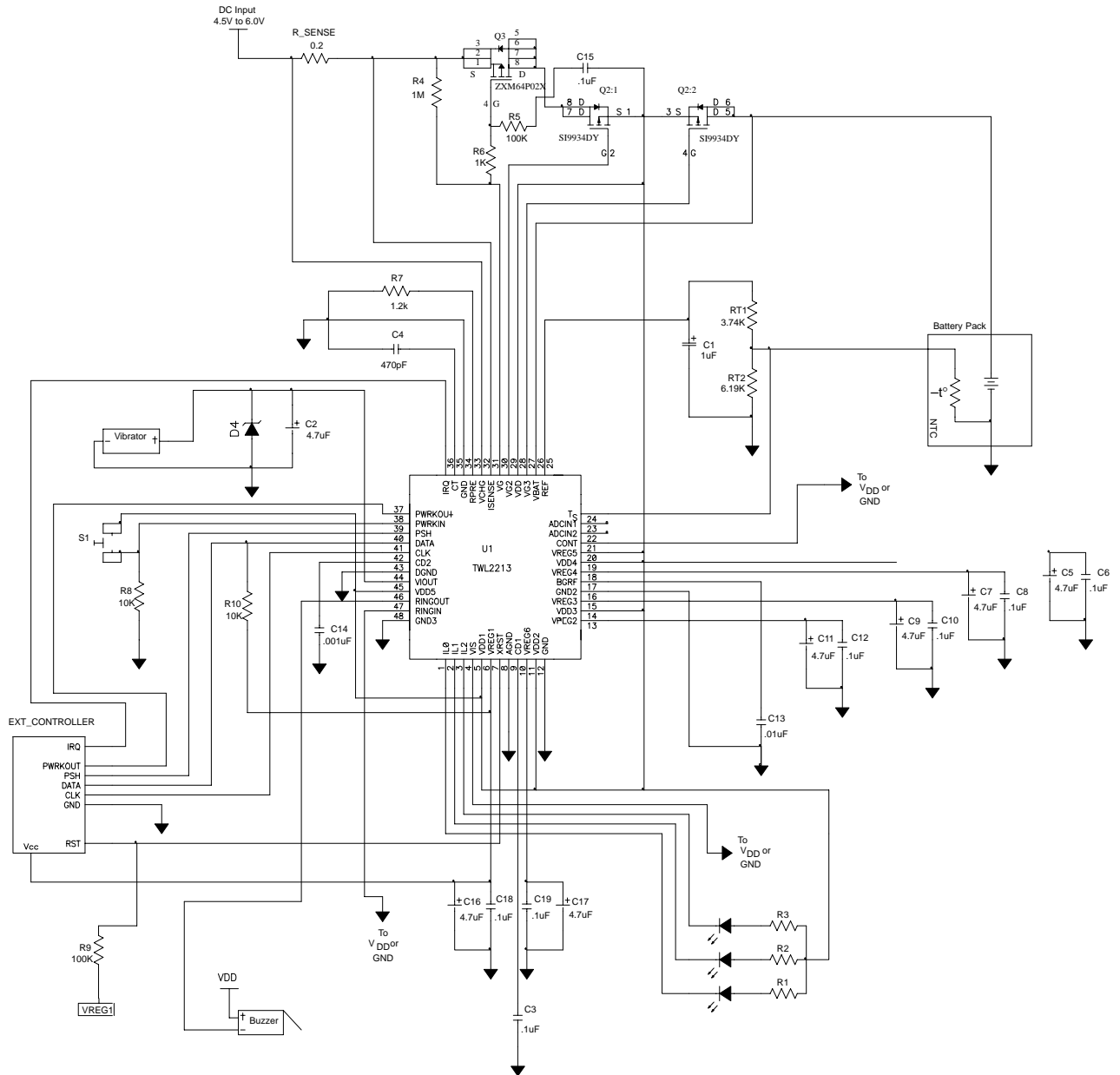


Figure 10. Typical Application Circuit

APPLICATION INFORMATION

device power supply control (V_{DD1})

The TWL2213 device receives device power by regulating the VCHG input to 4.1 V or 4.2 V, whenever VCHG is available; otherwise, the device uses the VBAT input directly as device dc supply. The regulated voltage from VCHG is programmable through the I²C interface.

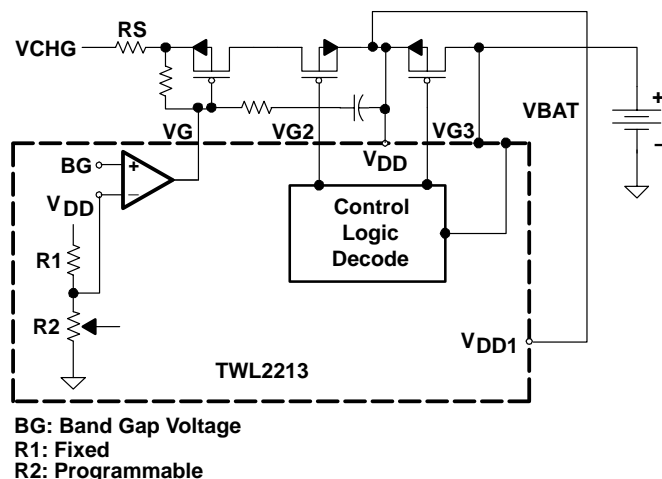


Figure 11. Device Power Supply

Condition 1: VCHG is on (VG = Active, VG2 = On, VG3 = Off)

$$V_{DD1} = BG \times \frac{R1 + R2}{R2} = 4.1 \text{ V or } 4.2 \text{ V}$$

TWL2213 device sets R2 value according to the programmed voltage level (4.1 V or 4.2 V).

Condition 2: VCHG is Off and VBAT applied (VG = High, VG2 = Off, VG3 = On)

$$V_{DD1} = VBAT$$

battery charger

The TWL2213 device provides a charger function for single cell Li-Ion battery packs. The charging activity starts with the battery pack wake-up cycle. If the wake-up cycle completes successfully, the charger starts the precharge function and slowly charges the battery to 3.2 V. If the battery is charged to 3.2 V within the time limit, the charger goes into the fast charge mode. The fast charge mode has two phases: 1) constant current mode (CC) and 2) constant voltage mode (CV). The charger starts CC mode with the maximal charging current until the battery voltage reaches the regulated voltage level. The charger is then switched to CV mode. During the CV mode, the TWL2213 device monitors the charging current; once it is below the programmed termination current level, the charger activity is terminated. The termination current level can be programmed at 10%, 20%, 30%, 40%, or 50% of the maximum charging current at the CC mode.

APPLICATION INFORMATION

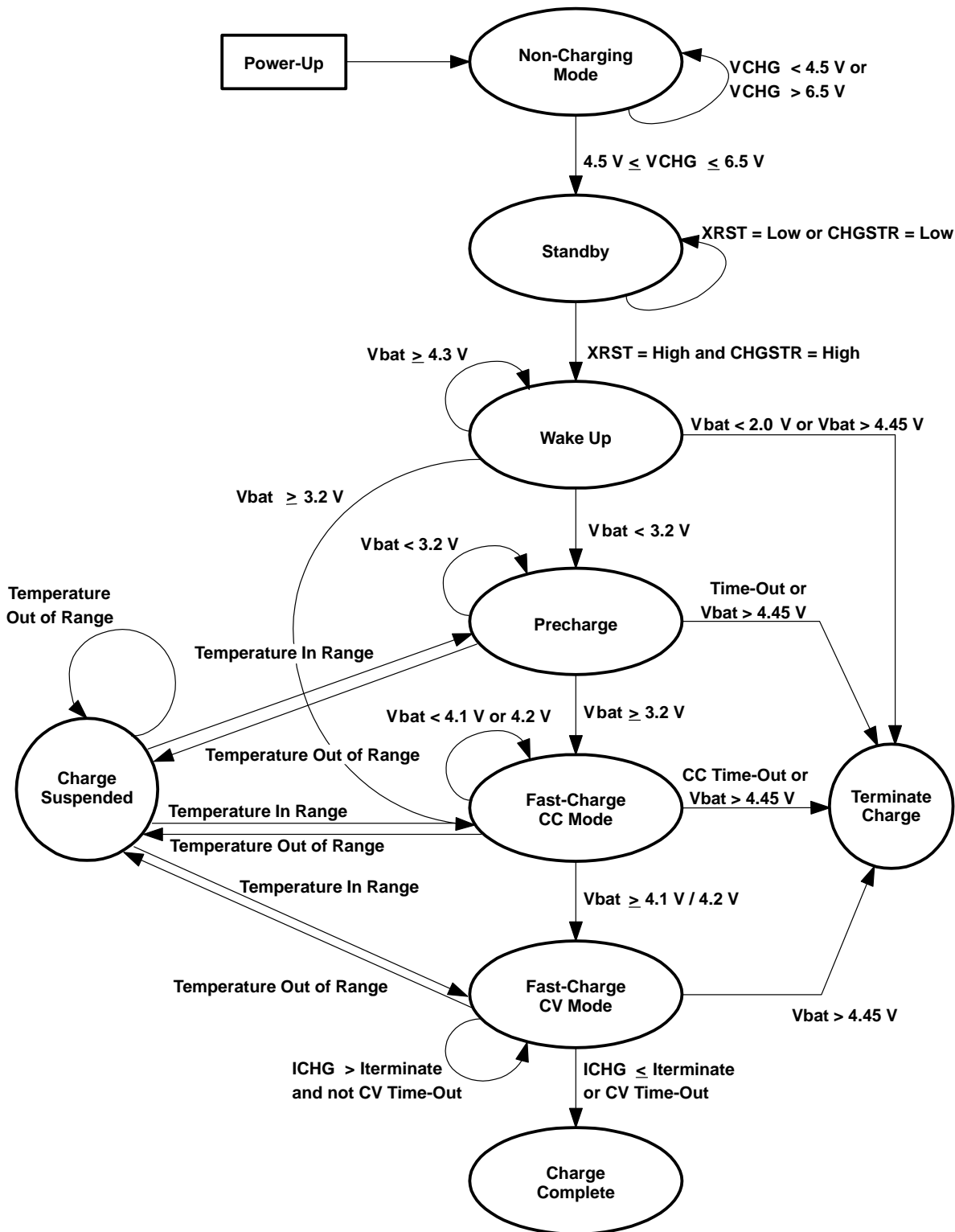


Figure 12. Charger State Diagram

TWL2213CA

POWER SUPPLY MANAGEMENT IC AND Li-Ion BATTERY CHARGE CONTROL

SLVS280 – MARCH 2001

APPLICATION INFORMATION

control register—FCR1 (1BH)

BIT	NAME	DESCRIPTION
7	CHGSTR	Set this bit to 1 to start the charger operation. This bit is cleared if the charger is terminated. (Refer to status register table below for terminated conditions)
6	ADC ENABLE	Set this bit to 1 to enable ADC operation, 0 to stop.
5	ADC Function	Set this bit to 1 to have ADC operate continuously. Set to 0 to have ADC to operate one cycle only.
4	ADBV	Set this bit to 1 to enable the VBAT input channel to ADC. 0: disable.
3	VTS	Set this bit to 1 to enable the VTS input channel to ADC. 0: disable.
2	ADCIN1	Set this bit to 1 to enable the ADCIN1 input channel.
1	ADCIN2	Set this bit to 1 to enable the ADCIN2 input channel.
0	IRQ	Status of IRQ pin (refer to IRQ operation section).

ADC has four input channels (ADBV, VTS, ADCIN1, ADCIN2). Each channel can be enabled or disabled individually. The selected channel must be enabled before ADC FUNCTION and ADC ENABLE bits are enabled, the channel is included in the ADC operation.

IRQ control/status

TWL2213 uses the IRQ signal to inform the external controller about the exception condition of the VCHG input and the charger status. Bit0 reflects the state of the IRQ signal. IRQ occurs in the following five conditions:

1. VCHG returns to operating range from non_operating range.
2. VCHG goes out of range from operating range.
3. Battery error—occurs only during the charging cycle.
4. Battery temperature out of range—occurs only during the charging cycle. The charger is suspended temporarily. IRQ is cleared when the temperature returns to normal and the charger resumes automatically.
5. Charge complete.

The controller must clear the IRQ signal by writing 0 to Bit0 in the interrupt service routine, except in the VBOT condition. The controller may miss the next interrupt if it fails to write the 0. In VBOT condition, TWL2213 clears the IRQ when the condition goes away.

status register description—SR (1CH)

SR shows the status of the charger. The external controller reads the SR to track the state of the charging condition.



TWL2213CA
POWER SUPPLY MANAGEMENT IC AND
Li-Ion BATTERY CHARGE CONTROL

SLVS280 – MARCH 2001

BIT	NAME	DESCRIPTION
7	VEXT	When Vext = 1 the VCHG input is in the operating range. Otherwise the VCHG is out of range.
6	BATERR	This bit is set to 1 indicating battery error. Four cases cause battery error: pre-charge timeout, constant-current mode timeout, VBAT < 2.9 V, or VBAT > 4.45 V.
5	VBOT	During the charging cycle, if the battery temperature exceeds or falls below the nominal range, this sets to 1. The charger is suspended temporarily. VBOT is cleared when the temperature returns to nominal range and the charger function resumes automatically.
4	CTERM	The charger is terminated normally because the charging current is below the preset termination current value.
3	NOCHG	No charge condition. This condition is detected only during the wake_up state of the charging function. After the 8-second wake up period expires, if VBAT is above 4.3 V, the NOCHG flag is set. The cause of this is a missing or completely charged battery. The TWL2213 does not deactivate the charger by setting CHGSTR = 0. The external processor must turn off the CHGSTR by setting it to 0.
2	PCHG	Set to 1 to indicate the charger is in pre-charge state.
1	CCTO	Set to 1 to indicate the charging time has exceeded the time limit allowed during CC-mode. This is a fatal error. TWL2213 clears CHGSTR bit, sets the BATERR flag, and makes IRQ go high to interrupt the external controller.
0	TCTO	Set to 1 to indicate the charging time has exceeded the overall time limit allowed during CV-mode. This is treated as normal termination of the charger function. TWL2213 clears the CHGSTR bit and sets IRQ to 1 to interrupt the external controller.

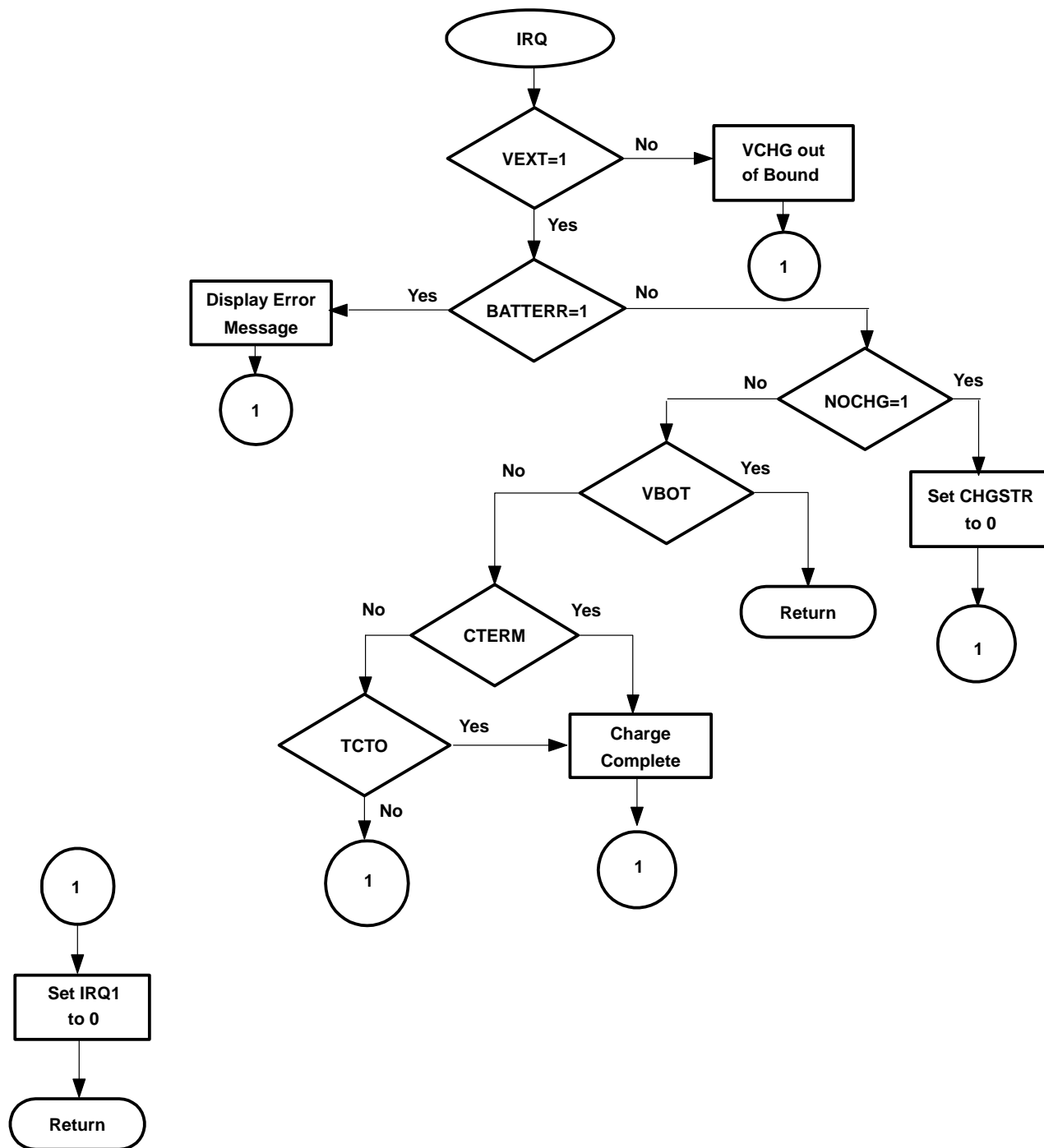


Figure 13. Charger State Diagram

battery pack wake up

Li-Ion cells can be easily damaged by overcharging or overdischarging. To prevent damage, a pack-protector device is used within the battery pack. During the charging cycle, if the pack-protector senses an over-voltage condition, it disconnects the pack from the charger to prevent further charging but allows discharging. During the discharging cycle, if the protector senses an under-voltage condition, it disconnects the cell from the load to prevent further discharging.

This phase of the charging cycle provides wake-up capability for the battery pack with a pack-protector device. At the start of the charge cycle, the TWL2213 device provides a wake-up signal of 1 mA and 4.3 V to the battery pack. At the end of the 8-second time limit, if the battery pack voltage remains at 4.3 V, a no-battery flag is set in the status register to signal the condition that the charging path is open. If the battery voltage is below 2.5 V, a BATTER flag is set in the status register to signal a bad battery cell. In either case, the charging activity is halted.

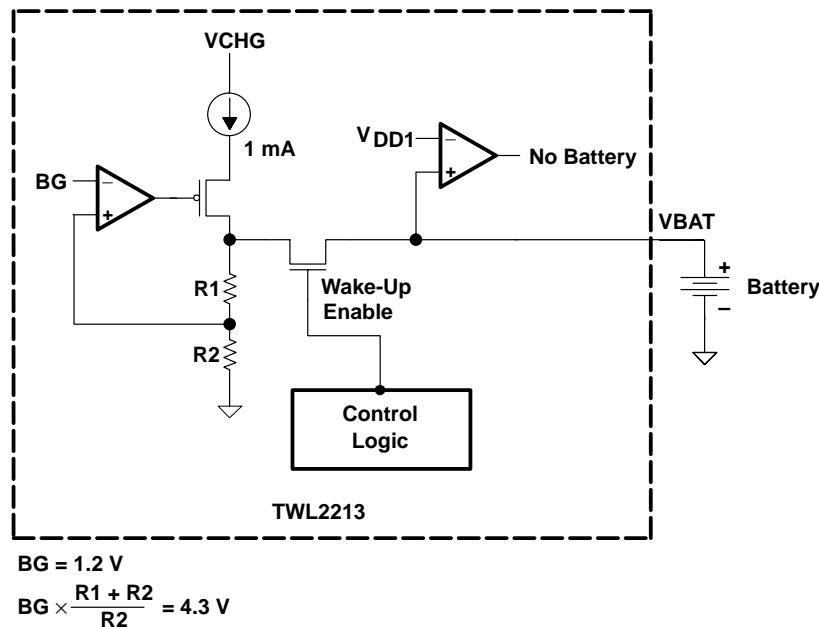


Figure 14. Battery Pack Wake Up

precharge

The TWL2213 device starts the precharge phase when the battery voltage is less than 3.2 V. The precharge time is limited by the PTR timer. The precharge current level is set by an external resistor. The maximum precharge current the charger can supply is 100 mA. Use the following equation to choose the external resistor value.

$$R_{pr} = \frac{V_{PRE}}{I_{pre}} \times 45, V_{PRE} = 1.2\text{ V} \pm 10\%$$

Where:

- R_{pr} = External resistor (ohm)
- I_{pre} = Desired precharge current (Amp)
- V_{PRE} = Voltage at RPRE Pin (Volts)

APPLICATION INFORMATION

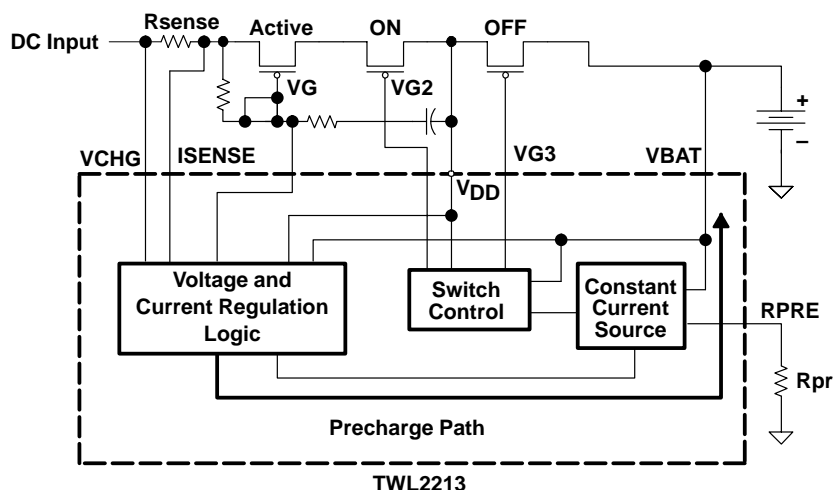


Figure 15. Precharge Functional Diagram

fast charge constant current (CC mode)

When the battery voltage is 3.2 V or higher, the TWL2213 device starts the fast charge CC mode cycle. In CC mode, the charger regulates the charging current to its maximum level. The maximum charging current (I_{max}) is determined by the external sense resistor, R_{sense} , and the voltage, V_{sense} . V_{sense} is programmable through the I²C interface (refer to CSV register for programming information). The range of V_{sense} is from 100 mV to 200 mV, in 20-mV steps. The CC mode charge time is limited by the CCTR timer.

$$I_{max} = \frac{V_{sense}}{R_{sense}}$$

fast charge constant current (CV mode)

When the cell reaches the constant voltage phase, the charger switches to the fast charge CV mode. The charging current begins tapering down while the charging voltage is regulated at the programmed voltage level (4.1 V or 4.2 V). The CV mode charging is limited by the TCTR timer.

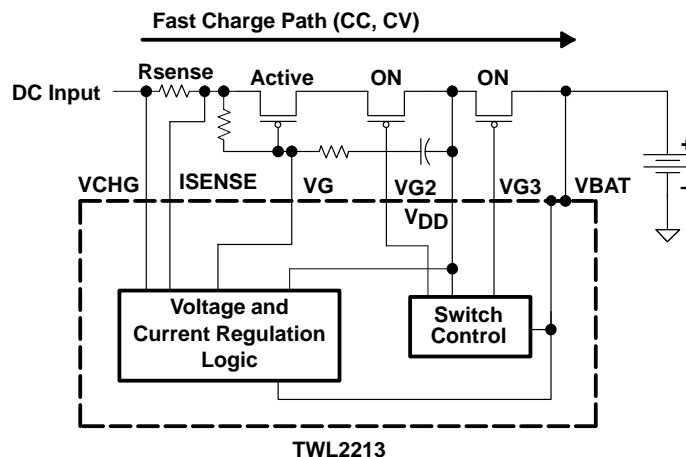


Figure 16. Fast Charge Functional Diagram

APPLICATION INFORMATION

current termination

During the CV mode, the charge cycle is terminated when the charging current is under the programmed terminated level or when the total charge timer (TCTR) times out. The terminated current level can be programmed to 10%, 20%, 30%, 40%, or 50% of the charging current at CC mode.

temperature monitoring

The TWL2213 device monitors the battery temperature throughout the charge cycle. The input for ADC reference voltage is generated by a negative temperature coefficient (NTC) thermistor. The TWL2213 device compares the ADC input reference voltage to the programmed threshold voltages to determine if charging is allowed. Three required thresholds are:

- VBOTRH+ Voltage for over-temperature cutoff; charging is suspended.
- VBORTH– Voltage to resume charging function for over-temperature cutoff.
- VBORTL Voltage for low-temperature cutoff; charging is suspended.

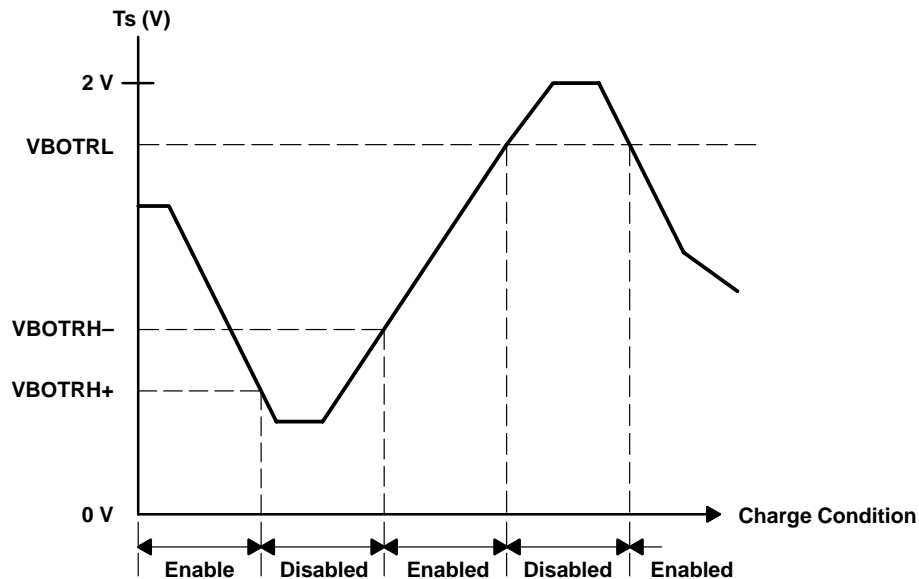


Figure 17. Temperature Monitoring

NOTE: The power-up default values are zero for these three thresholds. If the user opts not to use the temperature monitoring function during the charge cycle, the TS pin of the IC must be tied to the GND to avoid an error signal.

TWL2213CA

POWER SUPPLY MANAGEMENT IC AND Li-Ion BATTERY CHARGE CONTROL

SLVS280 – MARCH 2001

maximum time out

The TWL2213 device provides three timers for maximal time allowed for charging. The time is programmable through I²C interface.

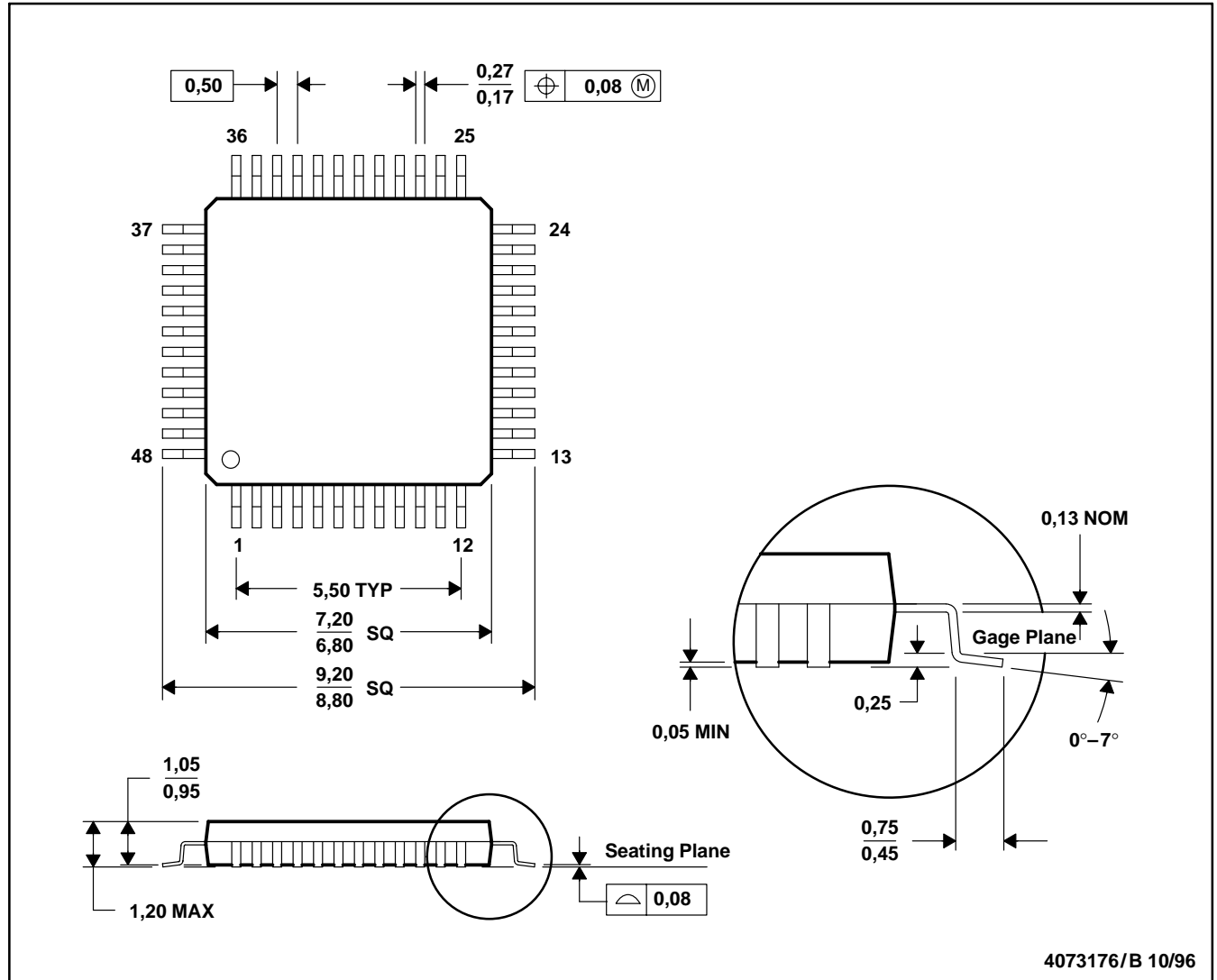
TIMER	RANGE	STEP	COMMENT
Precharge timer (PTR)	0–136 min	4 min	During the precharge cycle, if the timer expires before the precharging activity is complete, a BATT_ERR flag is set in the status register, and the charge is terminated.
CC charge timer (CCTR)	0–274 min	8 min	During the CC mode cycle, if the timer expires before the CC activity is complete, a BATT_ERR flag is set in the status register, and the charge is terminated.
Total charge timer (TCTR)	0–15 hr	1 hr	Total charge time is defined as the total charge time of CC mode and CV mode. TCTR time-out occurs only in the CV mode. If the timer expires before, the charge is complete.



MECHANICAL DATA

PFB (S-PQFP-G48)

PLASTIC QUAD FLATPACK



- NOTES: A. All linear dimensions are in millimeters.
 B. This drawing is subject to change without notice.
 C. Falls within JEDEC MS-026

IMPORTANT NOTICE

Texas Instruments and its subsidiaries (TI) reserve the right to make changes to their products or to discontinue any product or service without notice, and advise customers to obtain the latest version of relevant information to verify, before placing orders, that information being relied on is current and complete. All products are sold subject to the terms and conditions of sale supplied at the time of order acknowledgment, including those pertaining to warranty, patent infringement, and limitation of liability.

TI warrants performance of its products to the specifications applicable at the time of sale in accordance with TI's standard warranty. Testing and other quality control techniques are utilized to the extent TI deems necessary to support this warranty. Specific testing of all parameters of each device is not necessarily performed, except those mandated by government requirements.

Customers are responsible for their applications using TI components.

In order to minimize risks associated with the customer's applications, adequate design and operating safeguards must be provided by the customer to minimize inherent or procedural hazards.

TI assumes no liability for applications assistance or customer product design. TI does not warrant or represent that any license, either express or implied, is granted under any patent right, copyright, mask work right, or other intellectual property right of TI covering or relating to any combination, machine, or process in which such products or services might be or are used. TI's publication of information regarding any third party's products or services does not constitute TI's approval, license, warranty or endorsement thereof.

Reproduction of information in TI data books or data sheets is permissible only if reproduction is without alteration and is accompanied by all associated warranties, conditions, limitations and notices. Representation or reproduction of this information with alteration voids all warranties provided for an associated TI product or service, is an unfair and deceptive business practice, and TI is not responsible nor liable for any such use.

Resale of TI's products or services with statements different from or beyond the parameters stated by TI for that product or service voids all express and any implied warranties for the associated TI product or service, is an unfair and deceptive business practice, and TI is not responsible nor liable for any such use.

Also see: Standard Terms and Conditions of Sale for Semiconductor Products, www.ti.com/sc/docs/stdterms.htm

Mailing Address:

Texas Instruments
Post Office Box 655303
Dallas, Texas 75265

Copyright © 2001, Texas Instruments Incorporated



POST OFFICE BOX 655303 • DALLAS, TEXAS 75265

IMPORTANT NOTICE

Texas Instruments and its subsidiaries (TI) reserve the right to make changes to their products or to discontinue any product or service without notice, and advise customers to obtain the latest version of relevant information to verify, before placing orders, that information being relied on is current and complete. All products are sold subject to the terms and conditions of sale supplied at the time of order acknowledgment, including those pertaining to warranty, patent infringement, and limitation of liability.

TI warrants performance of its products to the specifications applicable at the time of sale in accordance with TI's standard warranty. Testing and other quality control techniques are utilized to the extent TI deems necessary to support this warranty. Specific testing of all parameters of each device is not necessarily performed, except those mandated by government requirements.

Customers are responsible for their applications using TI components.

In order to minimize risks associated with the customer's applications, adequate design and operating safeguards must be provided by the customer to minimize inherent or procedural hazards.

TI assumes no liability for applications assistance or customer product design. TI does not warrant or represent that any license, either express or implied, is granted under any patent right, copyright, mask work right, or other intellectual property right of TI covering or relating to any combination, machine, or process in which such products or services might be or are used. TI's publication of information regarding any third party's products or services does not constitute TI's approval, license, warranty or endorsement thereof.

Reproduction of information in TI data books or data sheets is permissible only if reproduction is without alteration and is accompanied by all associated warranties, conditions, limitations and notices. Representation or reproduction of this information with alteration voids all warranties provided for an associated TI product or service, is an unfair and deceptive business practice, and TI is not responsible nor liable for any such use.

Resale of TI's products or services with statements different from or beyond the parameters stated by TI for that product or service voids all express and any implied warranties for the associated TI product or service, is an unfair and deceptive business practice, and TI is not responsible nor liable for any such use.

Also see: Standard Terms and Conditions of Sale for Semiconductor Products. www.ti.com/sc/docs/stdterms.htm

Mailing Address:

Texas Instruments
Post Office Box 655303
Dallas, Texas 75265