

**DM5446/DM7446(SN5446/SN7446) 7 segment decoder/driver**  
**DM5447/DM7447(SN5447/SN7447) 7 segment decoder/driver**  
**DM5448/DM7448(SN5448/SN7448) 7 segment decoder/driver**

**general description**

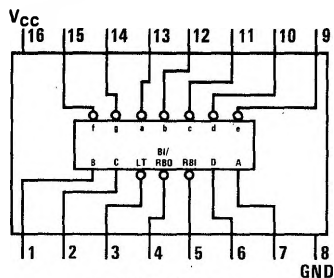
Seven-segment indicator lamps, logic circuits and discrete active devices are driven by this series of BCD decoders. All types fully decode a 4-bit BCD input. BCD numbers from zero through 9 are decoded to the standard 7-segment display format and BCD numbers above 9 to unique patterns that verify operation. Features include:

- Lamp-test input
- Leading/trailing zero suppression (RBI and RBO)
- Blanking input that may be used to modulate lamp intensity or inhibit output

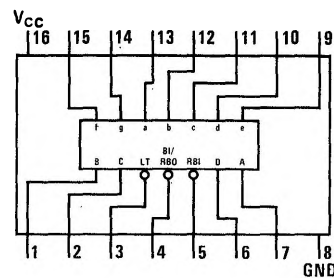
- TTL and DTL compatible

The DM5446/DM5476 has active-low, open-collector outputs that will drive lamp segments requiring up to 20 mA. The outputs will withstand 30V, with reverse current of 250  $\mu$ A. Normalized fanout is 12. The DM5447/DM7447 has similar output characteristics, except that the outputs withstand 15V. The DM5448/DM7448 has active-high, passive-pullup outputs with a fanout of 4. It is normally used to drive logic circuits or to operate high-voltage loads such as electroluminescent displays through buffer transistors or SCR switches.

**connection diagrams**



DM5446/DM7446  
DM5447/DM7447



DM5448/DM7448