

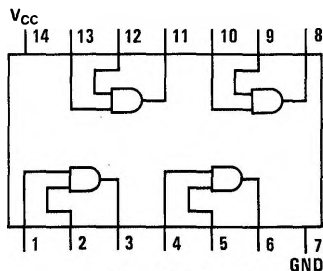
**DM5408/DM7408(SN5408/SN7408) quad 2-input AND gate**  
**DM5409/DM7409(SN5409/SN7409) quad 2-input AND gate**  
**(open collector)**  
**DM5411/DM7411(SN5411/SN7411) triple 3-input AND gate**

**general description**

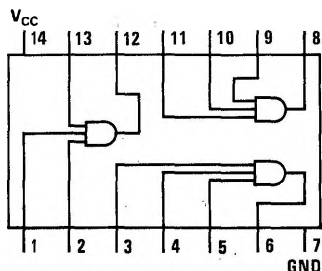
Unlike most TTL devices, these gates directly implement the positive AND or negative OR functions. The DM5408/DM7408 and DM5411/DM7411 have normal totem-pole outputs and

characteristics similar to other gates in the 54/74 TTL series. The DM5409/DM7409 has an open-collector output on each gate, allowing outputs to be wire-AND'ed for additional logic flexibility.

**connection diagrams**



**DM5408/DM7408**  
**DM5409/DM7409**



**DM5411/DM7411**