

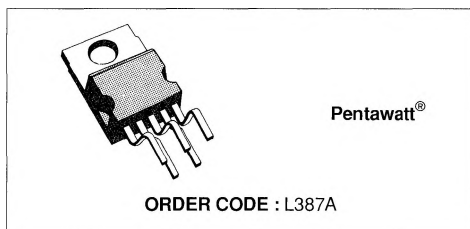
## VERY LOW DROP 5V REGULATOR

- PRECISE OUTPUT VOLTAGE ( $5\text{ V} \pm 4\%$ )
- VERY LOW DROPOUT VOLTAGE
- OUTPUT CURRENT IN EXCESS OF 500mA
- POWER-ON, POWER-OFF INFORMATION (RESET FUNCTION)
- HIGH NOISE IMMUNITY ON RESET DELAY CAPACITOR

L387A particularly suitable for microprocessor systems. This output provides a reset signal when power is applied (after an external programmable delay) and goes low when power is removed, inhibiting the microprocessor. An hysteresis on reset delay capacitor raises the immunity to the ground noise.

### DESCRIPTION

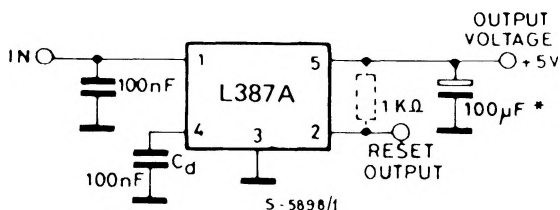
The L387A is a very low drop voltage regulator in a Pentawatt<sup>®</sup> package specially designed to provide stabilized 5V supplies in consumer and industrial applications. Thanks to its very low input/output voltage drop this device is very useful in battery powered equipment, reducing consumption and prolonging battery life. A reset output makes the



### ABSOLUTE MAXIMUM RATINGS

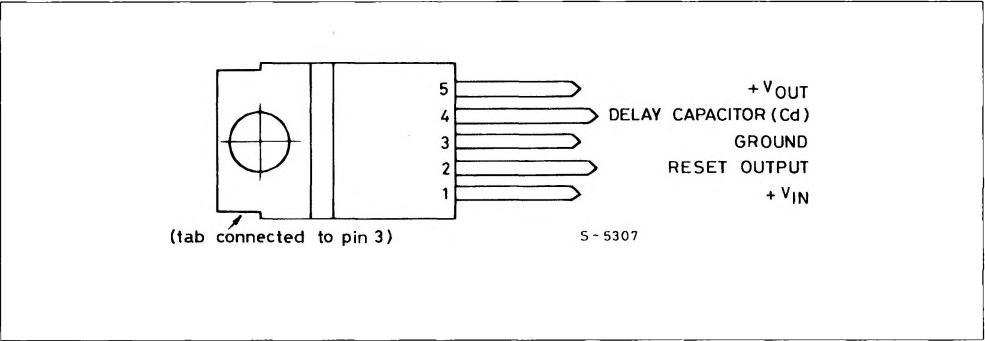
Symbol	Parameter	Value	Unit
$V_i$	Forward Input Voltage	35	V
$T_{op}$	Operating Temperature Range	- 40 to + 125	°C
$T_{stg}, T_J$	Storage and Junction Temperature	- 40 to + 150	°C

### APPLICATION CIRCUIT

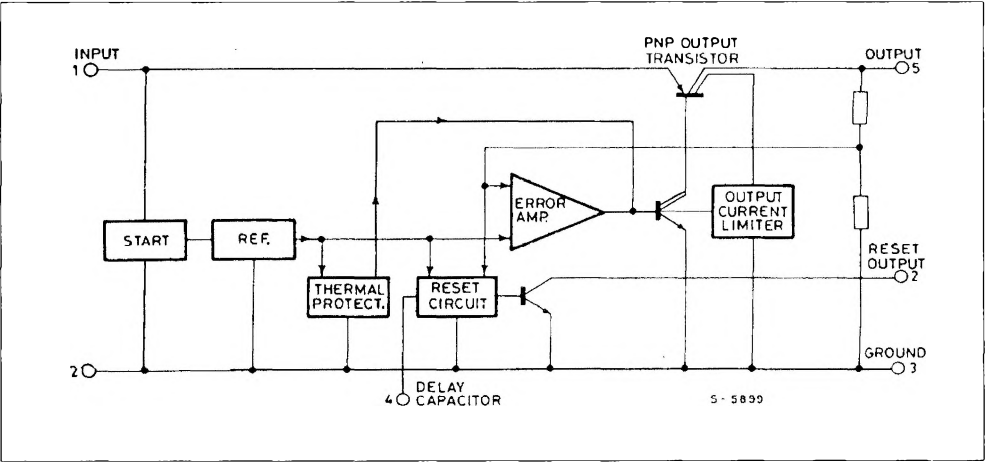


\* Min 33  $\mu\text{F}$  and max. ESR  $\leq 3\ \Omega$  over temperature range.

CONNECTION DIAGRAM (top views)



BLOCK DIAGRAM



THERMAL DATA

$R_{th\ j-case}$	Thermal Resistance Junction-case	Max	4	$^{\circ}C/W$
------------------	----------------------------------	-----	---	---------------

**ELECTRICAL CHARACTERISTICS** (refer to the test circuit,  $V_i = 14.4\text{ V}$ ,  $T_j = 25\text{ }^\circ\text{C}$ ,  $C_o = 100\text{ }\mu\text{F}$ ; unless otherwise specified)

Symbol	Parameter	Test Conditions	Min.	Typ.	Max.	Unit
$V_o$	Output Voltage	$I_o = 5\text{ mA to } 500\text{ mA}$ $T_j = 25\text{ }^\circ\text{C}$ $-40 \leq T_j \leq 125\text{ }^\circ\text{C}$	4.80 4.75	5.00 5.00	5.20 5.25	V
$V_i$	Operating Input Voltage	(*), Over Full T Range ( $-40$ to $125\text{ }^\circ\text{C}$ ) (see note **)			26	V
$\Delta V_o$	Line Regulation	$V_i = 6\text{ V to } 26\text{ V}$ $I_o = 5\text{ mA}$		5	50	mV
$\Delta V_o$	Load Regulation	$I_o = 5\text{ mA to } 500\text{ mA}$		15	60	mV
$V_i - V_o$	Dropout Voltage	$I_o = 350\text{ mA}$ $I_o = 500\text{ mA}$ $V_o = V_{O\text{ NOM}} - 100\text{ mV}$		0.40 0.60	0.65 0.8	V
$I_q$	Quiescent Current	$I_o = 0\text{ mA}$ $I_o = 150\text{ mA}$ $I_o = 350\text{ mA}$ $I_o = 500\text{ mA}$		5 20 60 100	15 35 100 160	mA
$\frac{\Delta V_o}{\Delta T}$	Temperature Output Voltage Drift	$V_i = 6.2\text{ V}$ $I_o = 500\text{ mA}$		160 -0.5	180	mV/ $^\circ\text{C}$
SVR	Supply Voltage Rejection	$I_o = 350\text{ mA}$ $C_o = 100\text{ }\mu\text{F}$ $f = 120\text{ Hz}$ $V_i = 12\text{ V} \pm 5\text{ V}_{pp}$		60		dB
$I_{sc}$	Output Short Circuit Current			1.2	1.6	A
$V_R$	Reset Output Voltage	$I_R = 3\text{ mA}$ $I_R = 16\text{ mA}$ $1 < V_o < 4.75\text{ V}$ $1.5 < V_o < 4.75\text{ V}$ Over Full T ( $-40\text{ }^\circ\text{C} \leq T_j \leq 125\text{ }^\circ\text{C}$ )			0.5 0.8	V
$I_R$	Reset Output Leakage Current	$V_o$ in Regulation Over Full T Range			50	$\mu\text{A}$
$t_d$	Delay Time for Reset Output	$C_d = 100\text{ nF}$ Over Full T Range		25		ms
$V_{RT\text{ (off)}}$		$V_o$ @ Reset out H to L Transition, Over Full T Range	4.75	$V_o - 0.15$		V
$I_{C4}$	Charging Current (current generator)	$V_4 = 3\text{ V}$	10	20	30	$\mu\text{A}$
$V_{RT\text{ (on)}}$	Power on $V_o$ Threshold	$V_o$ @ Reset out L to H Transition, Over Full T Range		$V_{RT\text{ (off)}} + 0.05\text{ V}$	$V_o - 0.04\text{ V}$	V
$V_4$	Comparator Threshold (pin 4)	$V_4$ @ Reset out H to L Transition	3.2		3.9	V
		$V_4$ @ Reset out L to H Transition	3.7		4.3	V
$V_H$	Hysteresis Voltage	Over Full T Range		450		mV

(\*) For a DC voltage  $26 < V_i < 35\text{ V}$  the device is not operating.

(\*\*) Design limits are guaranteed (but not 100 % production tested) over the indicated temperature and supply voltage ranges. These limits are not used to calculate outgoing quality levels.

Figure 1 : Dropout Voltage vs. Output Current.

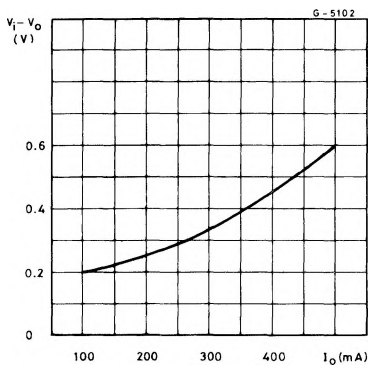


Figure 2 : Quiescent Current vs. Output Current.

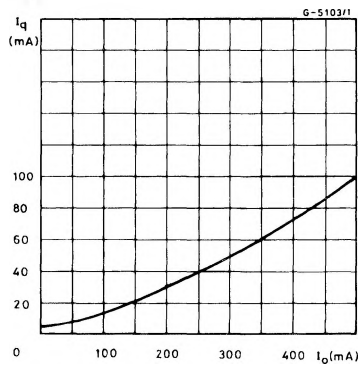


Figure 3 : Output Voltage vs. Temperature.

